

OREGON COMMERCIAL FISHING INDUSTRY TRENDS 2020-2025

Summary



Vessel participating in the Dungeness crab fishery returning to Port of Newport, Oregon. Photo credit tfoxfoto.

Oregon Coast Visitors Association

(This page is intentionally blank for printing purposes.)

OREGON COMMERCIAL FISHING INDUSTRY TRENDS 2020-2025

Summary

prepared by:

**The Research Group, LLC
Corvallis, Oregon**

prepared for:

Oregon Coast Visitors Association

March 25, 2026

Reproduction of Material

Authorization is granted for the report contents to be quoted either orally or in written form without the prior consent of the authors. Customary reference to authorship, however, is requested.

Warranty

The authors do not make any warranties with respect to the project including fitness for any particular purpose. The authors do not assume any liability for use of data, derived information, or statements of inferences.

Suggested Citation

The Research Group, LLC. Oregon Commercial Fishing Industry Trends 2020-2025, Summary. Prepared for Oregon Coast Visitors Association. March 25, 2026.

Preface

This investigation report was prepared for the Oregon Coast Visitors Association (OCVA) by The Research Group, LLC (TRG) located in Corvallis, Oregon. The primary author at TRG was Shannon Davis who was greatly assisted by Kari Olsen. Hans Radtke, Ph.D. Natural Resource Economist Consultant was a contributing author and conducted interviews with commercial fishing business representatives. Critical eyes were provided by Tommy Swearingen, Ph.D. (sociologist recently retired Oregon Department of Fish and Wildlife marine reserve program leader) and Gil Sylvia (economist recently retired Coastal Oregon Marine Experiment Station executive director).

An included glossary's content is acronym definition, data provenance and explanation of economic analysis terms. The term "economic modeling" explains the underlying methods used to calculate the commercial fishing industry economic contributions.

This investigation's economic analysis is based on preceding studies done for the Oregon Department of Fish and Wildlife by the same authors. Those study reports were loosely referenced as the biennial reports since a primary purpose was to provide information to the Oregon Legislature which meets in regular session every two years. Given this new investigation draws substantially on economic modeling methods, data, and results described in the previous studies, recounting and paraphrasing from those studies publications are used in this report sometimes without attribution.

This investigation report is a high level summary of the 2025 onshore commercial fisheries. The summary is a focused view for one element of the total fishing industry. It omits economic contributions calculations for marine related recreation fishing, participation in offshore, Alaska and other distant water fisheries. It does not include an analysis of aquaculture. An extended view of economic contributions that would be attributed to the fishing industry would come from the costs for management and research. Fishery disaster assistance would be another consideration for inclusion. The economic analysis stops at the seafood supply chain node for primary production. This omits economic contributions arising from seafood wholesale, retail and food service activities. Other economic analysis models are more comprehensive such as the NOAA Fisheries Commercial Fisheries and Seafood Industry Input-Output Model.

Year 2025 harvest data was preliminary and seafood market evaluations were still underway. Look to more detailed descriptions about commercial fisheries from the Oregon Department of Fish and Wildlife publications in the format of fisheries specific newsletters and updates to the website posted publication titled "An Overview of Oregon's Marine Commercial Fisheries." The Oregon Employment Department publishes annual articles summarizing seafood harvest and processor sector activities. The Pacific Fishery Management Council in their NEPA documentation for the fisheries they manage will include content for economic contribution estimates itemized for Oregon.

Acknowledgements are necessary. Marcus Hinz, Executive Director OCVA needs to be recognized for his instrumental and timely assistance in leading the report's development. Information from the four seafood associated commodity commissions (Albacore, Salmon, Dungeness Crab and Trawl) was especially helpful. Quick response to querying fish ticket data was provided by Brad Stenberg and Yan Jiang with the PacFIN Program, Pacific States Marine Fisheries Commission. Staff from the Alaska Commercial Fisheries Entry Commission and Alaska Department of Fish and Game rapidly provided data and interpretations for the characterization of Oregon resident Alaska fisheries participation trends. The conduct of the study included interviewing other government agencies and commercial fishing business representatives. The informal conversations provided important analysis inputs when data sources needed to be supplemented and/or results verified. The interviewees were generous in their time and need to be complimented for their assistance. Because authorization was not sought to mention names, TRG thanks them anonymously for their participation.

Although reviewers provided many useful comments and suggestions, they were not asked to endorse study results. The authors are solely responsible for content. The report contains methodologies recommended with the understanding that technically sound and defensible approaches would be used. Where judgment became necessary, conservative interpretation was to be employed. Because this philosophy was strictly adhered to in all aspects of the report, the materials developed are deemed useful descriptions of economic implications and contain reasonable estimates of the current economy.

The report is prepared to assist in understandings and decision making. The author's interpretations and recommendations should prove valuable for that purpose, but no assurance can be given that decisions based on this plan will fulfill expectations of market demands nor achieve financial projections. Government legislation and policies, market circumstances and other situations can affect the basis of assumptions in unpredictable ways and lead to changes in study conclusions.

Table of Contents

	<u>Page</u>
Preface	i
Table of Contents	iii
Summary	1
Overview	1
Fisheries	2
Industry Concentration.....	4
Processing and Distribution.....	5
Outlook	5
Bibliography	15
Glossary	17

List of Tables and Figures

- Table 1: Economic Contributions by Onshore Major Fisheries in 2020 to 2025
- Table 2: Economic Contributions by Measures for Income, Output and Jobs for Onshore Fisheries in 2020 to 2025
- Figure 1: Economic Contributions From Onshore Landings in 1973 to 2025
- Figure 2: Selected Fisheries and Other Protein Price and Volume Trends in 2000 to 2025
- Figure 3: Onshore Landed Value and Volume by Major Fishery in 1985 to 2025
- Figure 4: Vessel and Processor Counts and Annual Average Harvest Value Per Vessel and Processor in 2000 to 2025
- Figure 5: Ocean Recreational Fisheries Trip Trends in 2020 to 2025
- Figure 6: Oregon Seafood Imports and Exports in 2016 to 2025

Appendix

- Appendix A: Statewide Landing Volume, Value, and Price Trends
- Appendix B: Port Group Landings and Vessel/Processor Activity Trends
- Appendix C: Commercial and Recreation Fisheries Effort Trends
- Appendix D: Dungeness Crab Fishery Season Landings History
- Appendix E: Oregon Resident Participation in Alaska Fisheries

(This page is intentionally blank for printing purposes.)

Summary

Overview

The Oregon onshore commercial fishing industry's economic contributions were an all-time high in Year 2025.¹ Harvesting and processing businesses generated \$517 million income (includes multiplier effects) to households in Oregon last year. This is \$81 million more income than the previous 5-year (2025 real dollars) average. The generated income represents about 10,300 jobs in Oregon. Business total economic activity was \$1.1 billion.² The economic contribution (income measure) trend by major fisheries for a 50-year period (2025 real dollars) is shown in Figure 1. Table 1 contains the same measure for 2020 through 2025. Table 2 summarizes the economic contribution for measures income, business activity and jobs in 2020 through 2025.

While total landings were up in 2025, commercial and recreational fishing participants are subject to catch and access variability as well as volatile market conditions. For example, seafood sales for at-home consumption shifted demand away from restaurant sales during the 2020, 2021 pandemic years. This drove up prices, and with a contraction in the overall economy shrinking purchases of higher cost seafood products, caused domestic seafood sales to wane in 2022. Processors and distributors were stuck with the freezer stockpiles and were forced to cut prices to move the inventories in 2023. Offerings to harvesters reflected the new lower price levels in 2023. There are increasing biophysical effects from climate change that will exacerbate harvest variability. There will be other conflicting spatial uses of the ocean, such as wave/wind energy generation, telecommunication seabed cables, and whale migration routes. Also facing the industry are agile foreign market competitors, stricter regulation, changes in consumer tastes, new technologies, and changing societal values toward natural resources protection.

The findings are from an investigation completed by The Research Group, Corvallis, Oregon. for the Oregon Coast Visitors Association (OCVA). Marcus Hinz, Executive Director OCVA says: "its welcome news among the doom and gloom heard about our natural resources. It shows this industry's significance in Oregon's blue economy and the importance for supporting associated businesses and workforce." The OCVA is actively engaged in promotion programs to increase local consumer demand and higher utilization of local harvests. Marcus continues: "the commercial and recreational fishing opportunities are draws for increased tourism on the Oregon Coast. Eco- and culinary-oriented travelers are attracted to destinations that demonstrate strong natural resource assets and stewardship."

-
1. All fisheries have calendar year accounting except the Dungeness crab fishery. This fishery's season opening date by regulation is December 1. Sometimes the season opening is delayed to later in the month or for entire month at certain coastal zones. (See the fishery's landing history by month in Appendix A.) Any delay tends to move first-of-season high catch rates to the following calendar year which then will be combined with an on-time December 1 season opening to make a calendar year accounting deceptively exaggerated. To make year-over-year comparisons consistent, the included fishery's landings have a December 1 to November 30 accounting period. The fishery includes harvests from ocean and bay fishing grounds.
 2. Business activity is harvesting and primary processing business output. See the glossary entry "output" for the explanation of its definition and applicability as an economic contribution measure.

A contributing author to the investigation was Hans Radtke, Ph.D. from Yachats who says: “there were ups and downs in particular fisheries, but overall 2025 was a great year for multi-fishery participants. Unprecedented high beef prices combined with fish health benefits are driving consumers to think about using seafood as a substitute.” Higher demand, which can maintain harvest prices, is returning after a big drop in seafood sales in the post-pandemic years. Oregon exporting is now facing new challenges from international trade barriers and tariffs. The trade interruptions hit some fisheries harder than others. For example, as much as 40 percent of the Dungeness crab catch is sold as “live” to largely Asia markets.

The total commercial fishing industry (from local harvesting/processing, aquaculture and participation in distant water fisheries) generated about 10 percent of all earned income within Oregon coastal counties in 2021 (OCVA January 2024). The industry economic impact varies from about 4 percent in Tillamook County to 16 percent in Clatsop and Lincoln counties. Coos and Curry counties had about 6 and 5 percent respectively. At some Oregon ports, distant water fishery participation by Oregon residents can be more than one-third of the total. However, the investigation showed there was declining Alaska fisheries’ harvest value in recent years (Appendix B). Alaska crew members and boat licenses with residence addresses in Oregon have declined.

Fisheries

The Oregon commercial fishing onshore deliveries in 2025 totaled to 302.6 million round pounds and \$223.3 million harvest value when all fisheries accounting period is calendar year. The following particular fisheries discussion references landed volume, value and prices in Tables A.1 through A.3 and summarized on Figure 2. Landed volume and price trends over a 25-year period are shown on Figure 3. Port group landings and effort are shown on Tables B.1 through B.4 and C.1. Figure 4 shows unique vessel and processor count trends.

- The Dungeness crab fishery 2025 calendar year landings had a record high average dock price, and coupled with average catch levels at 19.0 million pounds, generated Oregon’s second highest yearly harvest value at \$107.5 million. The crab fishery has comprised half of all fisheries’ harvest value in past seasons. The fleet uses pots to catch crab. Landings are largely during the months of December and January depending on season opening regulations. Around 300-350 vessels out of 421 with permits make 6,000 or so deliveries in a typical season.
- The troll gear albacore tuna fishery catch and price were up in 2025. The harvest volume was 8.6 million pounds and harvest value was \$17.9 million. With a harvest price increase, the harvest value is more than double the value in 2024 (real 2025 dollars). Upwards of 200 vessels will make 800 deliveries in this fishery. Many of the vessels in this fishery also participate in the troll salmon fishery. There is increased domestic demand for sushi and canned tuna products. The fishery has received certification for being managed sustainably which has driven up consumer interest.

- Black cod had phenomenal landings in 2025 given higher quotas due to several good recruitment years that moved high abundance juvenile fish into sizes fishable by the fleet. The 2025 harvest volume was almost three times the previous 5-year average at 5.7 million pounds. The 2025 harvest value was \$15.1 million. There are separate management quotas for trawl and fixed gear (pots or longline), but gear switching to harvest the two quotas is allowed. There will typically be 100 vessels making 1,500 deliveries in directed trawl and directed fixed gear fisheries. Alaska and West Coast landings kept supplies high and prices low. There is a large Japanese market for this fish and lower prices induced the export demand. Consumers find black cod to be an acceptable cost substitute for higher priced white fish such as halibut and scallops.
- Onshore landings of Pacific whiting were up in 2025 at 175.7 million pounds with a harvest value at \$21.7 million. In any given year, up to 30 or so directed fishery vessels will make about 1,000 deliveries. The deliveries were disbursed at several regional fishing centers along the Oregon Coast in the recent past, however all landings were made to Newport and Astoria area ports in 2025. There are several products manufactured from whiting including surimi which can be made into a crab substitute product. There are markets both for fillets and headed and gutted products. Another product is whole frozen fish exported to Africa nations. Carcasses from whiting and other groundfish fillets are made into fish meal at plants along the Columbia River. There are separate management quotas for the onshore and offshore whiting fishery. Large processing only vessels called motherships receive deliveries from catcher vessels and there are other vessels that catch and process. A new whiting supply chain mode occurred starting in 2024 for the offshore fishery. Instead of just fishing/freezing, then traveling to Puget Sound ports, the catcher-processors instead transferred some of their processed product in Coos Bay to a small cargo ship. The cargo ship when loaded commuted to Puget Sound. The Oregon Department of Fish and Wildlife collected ad valorem taxes on the transfers as if they were an onshore whiting delivery.
- Pink shrimp had record high landing volume (57.3 million pounds) but had continued modest prices in 2025. The harvest value was \$29.5 million. A typical season will have 60 to 70 vessels making 1,000 deliveries in this fishery. This Oregon regulated fishery in recent years provided about 15 percent of Oregon total harvest value. Like the tuna fishery, this fishery is certified as sustainable.
- Other rockfish and groundfish prices are stunted with landings limited by low management quotas and low attainment of the quotas. The harvest value not including black cod and not including whiting was \$16.6 million in 2025. The participating fleet is buoyed by the news that some selected species (canary rockfish, shortspine thornyhead, and petrale sole) have an emergency 10 percent increase in quotas for the 2026 season. Species in this category can constrain catch of other healthy biomass species in mixed stock fisheries. Once vessel quotas are reached, all gear dependent fishing must stop.

- The Oregon salmon fishery had an uptick in 2025 volume (2.3 million round pounds) mostly due to higher Columbia River net gear Chinook fishery landings. It is necessary to go back 10 years to have greater landings than occurred in 2025. The ocean and Columbia River (deliveries to the Oregon side) commercial fishery harvest value in 2025 was \$10.4 million. In recent years when the ocean troll fishery has not been entirely closed, there will be about 160-180 vessels making 1,400 deliveries. About half of these vessels land 90 percent of the catch (PFMC February 2026). In the Columbia River net fishery, there is around 130 vessels making 4,000 deliveries. This does not include counts of tribal fishery vessels. The current ocean salmon fishery is greatly diminished due to low abundance levels of contributing stocks from the Columbia River, Klamath River and California central valley rivers.
- There have been other fisheries in the past that have had substantial harvests. Example fisheries are Pacific sardine and market squid. The northern population of Pacific sardine is at a low point of what seems to be a 30-year cycle. Market squid abundances are highly variable. There was sufficient biomass in the 2018-2022 years for a viable fishery. Then there was no fishery in 2023. There were positive explorative catch levels for market squid in 2025. It could be this means higher abundances for the 2026 season. Purse seine gear is used for the fishery and a large number of vessels using this gear are attracted from Bellingham and southern California for the fishing opportunity. Thirty-five to forty vessels will make several hundred deliveries during high catch years.

Ocean recreational fisheries trip counts are shown on Table C.2 and Figure 5. Catch (numbers of fish) by select species is shown on Table C.3. Angler trip making behavior is highly influenced by perceived catch rates. Participation has been steady the last six years as fishery management has provided for access opportunities.³

Recreation and commercial fishing are highly regulated by the Oregon Fish and Wildlife Commission and the Pacific Fishery Management Council. Both entities use conservation approaches in their management. The healthy fisheries in 2025 are a testament to regulation success for protecting fish populations and marine habitats. The regulations allow populations to reproduce and replenish, while minimizing negative impacts on the broader marine ecosystem, such as through bycatch or habitat destruction.

Industry Concentration

There is onboard equipment technology upgrading and processing business consolidation occurring in the commercial fishing industry. The industry's harvest efficiency is gaining. Figure 4 shows the number of harvesting vessels is decreasing and remaining vessels have increased average revenue. Processor businesses are centralizing. For example, the large processor business Borstein Seafood has left Newport and instead is doing all Oregon processing in

3. The calculation of recreational fishing economic contributions was not tasked for this investigation. Estimates for 2021 can be found TRG (June 2024).

Astoria. Some whiting processing plants owned by Pacific Seafood are not operating in favor of operations located in the Astoria area. Successful vessel businesses are diversified in multiple fisheries to avoid the vagrancies (due to low cycles of abundance, adverse weather, market conditions, etc.) that can happen in single fisheries. There used to be thousands of salmon fishery only vessels on the Oregon Coast (ODFW 1976). Surviving vessel businesses have acquired permits to combine salmon fishing with other species like tuna, crab, rockfish, etc.

Processing and Distribution

Oregon onshore landings from harvests in the ocean and Columbia River catch areas are processed into seafood products that are sold locally or are shipped to high volume processing and distribution centers. The seafood products enter niche or commodity markets, both domestic and global. Those commodity markets include product substitutes that influence the price paid to processors and distributors that buy from Oregon harvesters. For example, many of the species landed in Oregon also are landed in greater numbers in Alaska and British Columbia. For a comparison, Oregon's harvest value in 2021 was only seven percent of all U.S. West Coast, Alaska, and BC landings (TRG June 2024).

High volume Oregon fisheries (such as the whiting fishery) provide fish resources that are better suited for distribution to out-of-state domestic and foreign markets. Oregon fisheries do not provide the resource for some local high demand seafood such as large warm-water shrimp. Retail and food service businesses must source supplies from elsewhere. It was found across all establishment business types (grocery stores, schools, fast-food and family restaurants, etc.) that about 90 percent of seafood supplies sold in Oregon coastal counties were non-local catch (TRG May 2022). There is a huge potential through distribution infrastructure (e.g. cold storage), branding (e.g., labeling) and instituting traceability and marketing (including advertising) programs to better penetrate local catch utilization.

In regards to foreign importing and exporting, despite the very active commercial fishing industry, trade statistics show that Oregon imports more seafood than it exports (Figure 6). India, Canada and China typically account for 90 percent of seafood imports. The importing statistics include re-importing which is when seafood is sent to a foreign country for lower-cost processing and then brought back for sale in the original market. An example re-importing product is whole frozen Dungeness crab sent to China for meat picking, then brought back to Oregon for packaging and distribution. Top countries receiving Oregon exports have been Canada, Japan, South Korea, and several eastern European and Africa countries. Vancouver, BC is an embarkation for a live Dungeness crab product shipped to Asia markets. Seafood foreign trade in the last several years has been heavily influenced by a complicated array of imposed trade barriers, fluctuating tariffs and changing dollar exchange rates.

Outlook

Harvesters are facing increasing fixed costs in capital, vessel repairs, moorage, insurance (hull, indemnity, liability), etc. and continue to be in uncertain revenue positions. Processors were not

buying in certain fisheries in 2022 even though a vessel had the license, quota and platform to catch. Fish prices are undependable, for example in recent years pink shrimp was double and black cod was more than three times what they are today. Surveys show vessels barely cover the variable costs (fuel, crew shares, etc.) of operations in some fisheries. Slim margins make the business high risk let alone the work being physically demanding and dangerous.

The health of the industry has a social context for the well-being of harvesters, processor workers, affected communities, and ultimately the public. Studies show Oregonians not only care about natural resource conservation, but have empathy and appreciate the lifestyle of the participants. Those involved in the industry know its vagaries: part-time employment, changes in stock abundances, dangerous weather conditions, volatile prices, and seeming unending surprises in management and regulations. Families and businesses must be dynamic and flexible to survive and prosper. Their resilience and innovation is celebrated by those that enjoy Oregon seafood.

Table 1
Economic Contributions by Onshore Major Fisheries in 2020 to 2025

Fishery	2020	2021	2022	2023	2024	2025
Salmon	11,131.1	13,662.8	18,556.1	12,205.8	16,605.5	23,009.1
D. Crab	172,053.7	136,855.2	212,142.6	190,419.7	202,174.4	205,825.1
Pink Shrimp	69,640.7	68,917.8	48,542.7	46,649.6	64,737.4	69,627.4
Albacore Tuna	17,007.9	15,242.9	37,832.4	8,964.8	20,621.2	43,269.7
Groundfish	56,130.1	65,408.7	81,455.7	68,681.5	56,142.8	77,135.8
P. Whiting	83,939.6	92,221.4	81,840.8	62,285.3	60,006.2	85,879.4
P. Sardine	0.0	3.1	0.0	1.0	0.0	0.0
P. Halibut	2,632.0	3,352.7	3,793.5	3,724.1	2,813.4	4,147.3
Market Squid	11,906.9	8,627.5	11,323.7	0.0	823.5	2,407.6
Other	<u>6,758.4</u>	<u>5,169.4</u>	<u>13,260.7</u>	<u>7,597.6</u>	<u>5,678.0</u>	<u>6,001.1</u>
Total	431,200.5	409,461.6	508,748.2	400,529.4	429,602.4	517,302.5

- Notes: 1. Economic contributions are expressed as statewide labor income (includes multiplier effect) in thousands of 2025 dollars. Real dollar adjustment uses the GDPIPD.
2. All fisheries are calendar year except the Dungeness crab fishery landings are December 1 in previous year through November 30 of the stated year.
3. "Other" species in 2024 includes landings (thousands of pounds, thousands of nominal dollars) of sea urchins (205, \$516), basket cockle (218, \$411), gaper clam (280, \$267), hagfish (197, \$236), razor clams (49, \$186), and other species.
- Sources: TRG (June 2024), PacFIN APEX report ALL002 downloaded January 2026, and CRAB001 downloaded February 2026. IO-PAC response coefficients from IMPLAN year 2023.

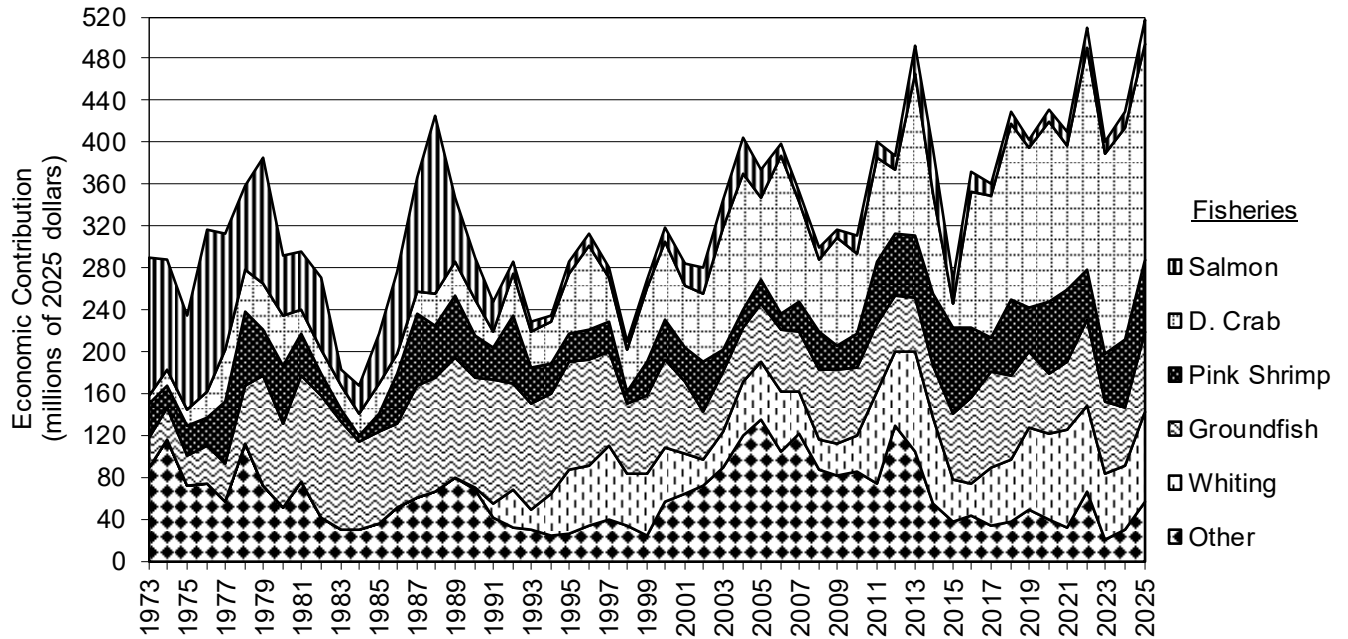
Table 2
Economic Contributions by Measures for Income, Output and Jobs for Onshore Fisheries in 2020 to 2025

Measure	2020	2021	2022	2023	2024	2025
Income	431.2	409.5	508.7	400.5	429.6	517.3
Output	838.3	802.9	1,092.2	866.3	930.9	1,125.1
Jobs	5,318	5,012	9,620	7,430	8,154	10,321

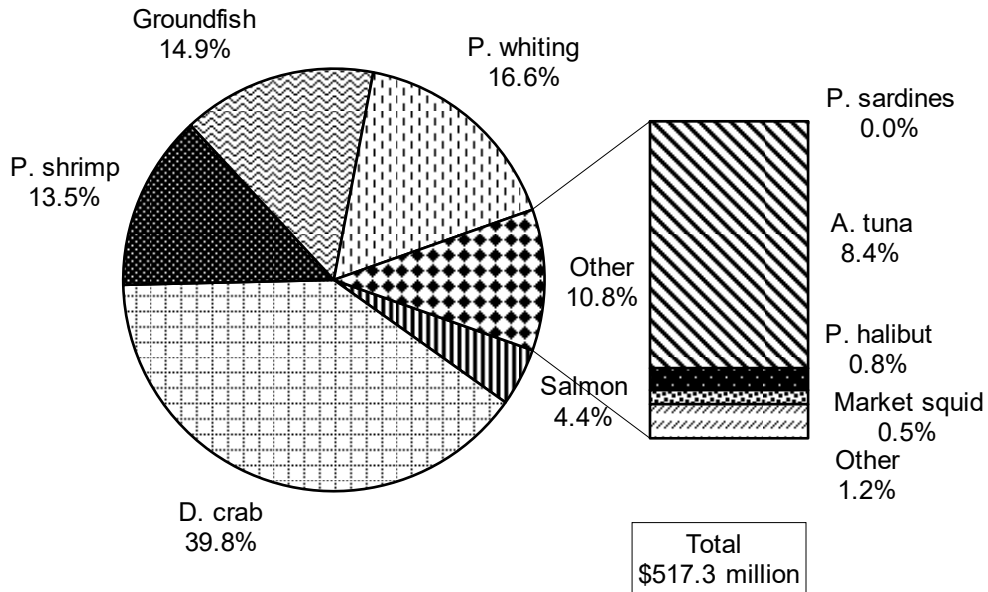
- Notes: 1. Income and output are in millions, adjusted to 2025 dollars using the GDPIPD.
2. Economic level is statewide.
3. Jobs use IO-PAC employment response coefficients to calculate jobs for years 2022-2025. Jobs for years 2020 and 2021 use BEA average wage and salary for Oregon.
4. Economic contributions are calendar years for all fisheries except the Dungeness crab fishery which are seasons (December 1 through November 30).
- Sources: TRG (June 2024) and PacFIN APEX report ALL002 downloaded January 2026. IO-PAC response coefficients from IMPLAN year 2023.

Figure 1

Economic Contributions From Onshore Landings in 1973 to 2025



Economic Contributions by Major Fishery in 2025



- Notes: 1. Economic contributions are expressed as statewide labor income (includes multiplier effect) in millions of 2025 dollars. Real dollar adjustment uses the GDPDP.
 2. Economic contributions are calendar years for all fisheries except the Dungeness crab fishery which are seasons (December 1 through November 30) in 2020 and forward.

Figure 2
Selected Fisheries and Other Protein Price and Volume Trends in 2000 to 2025

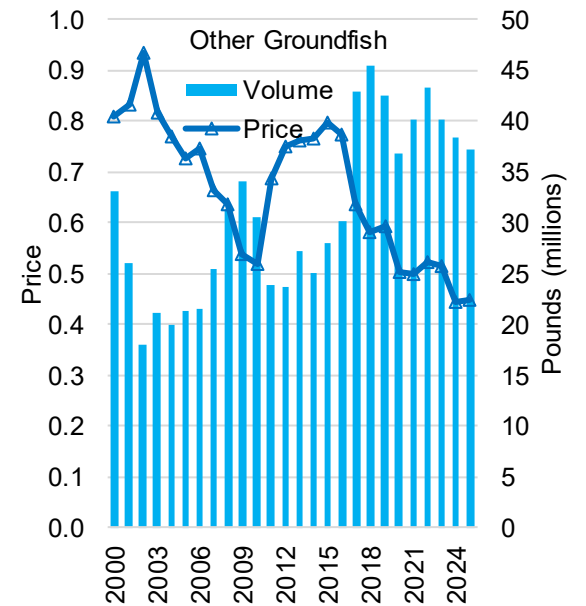
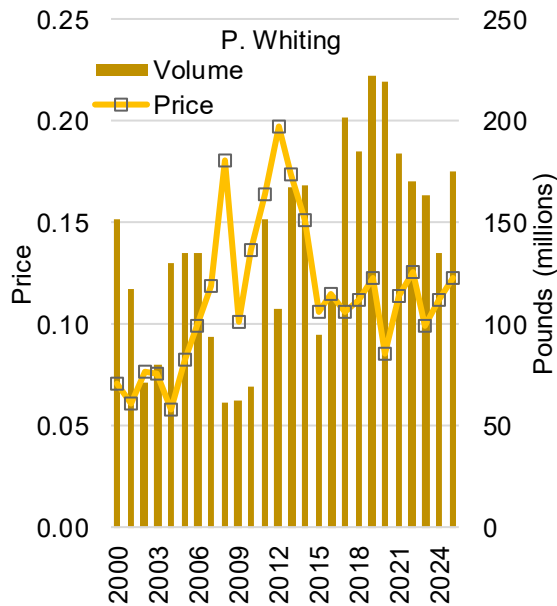
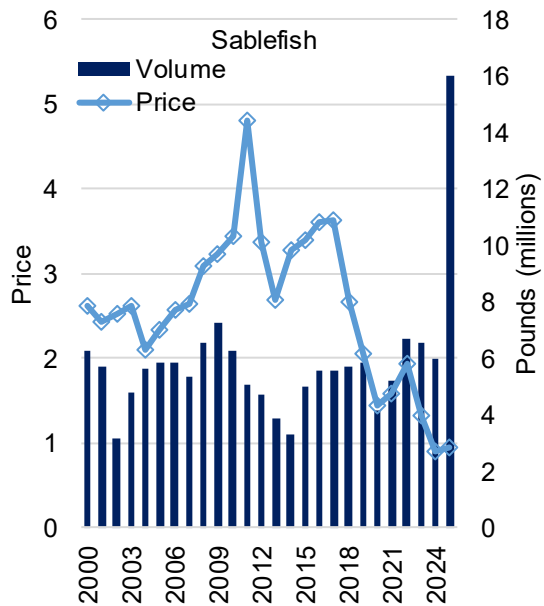
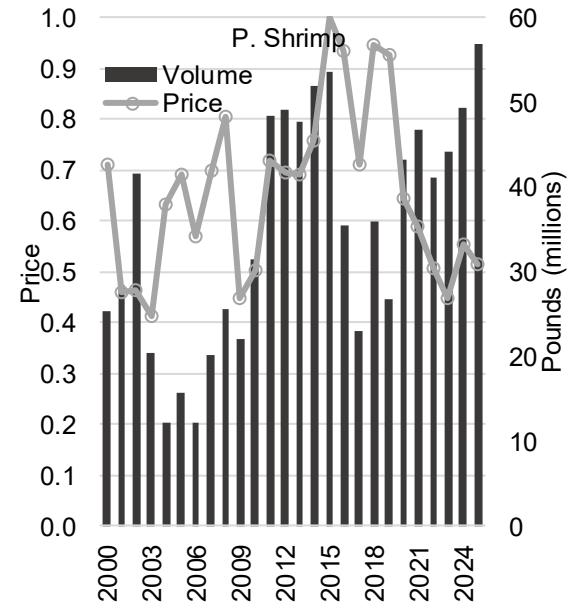
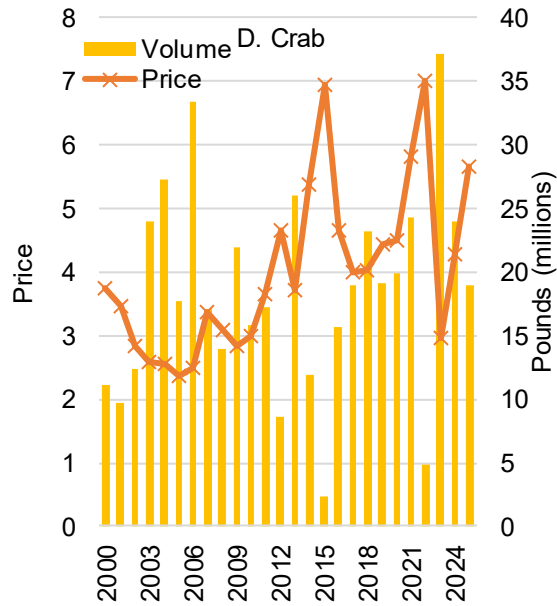
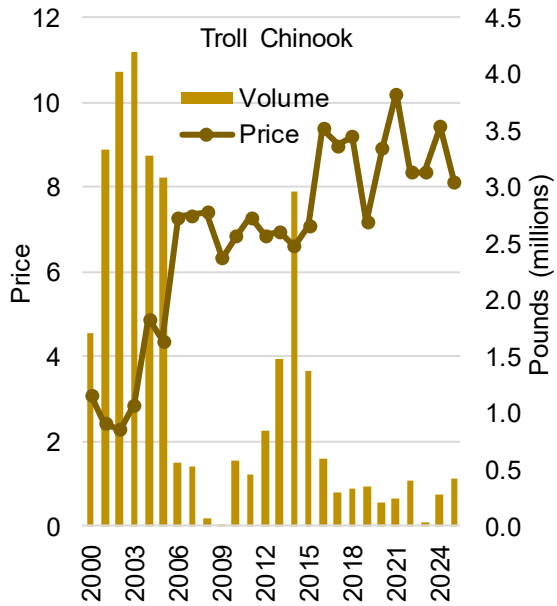
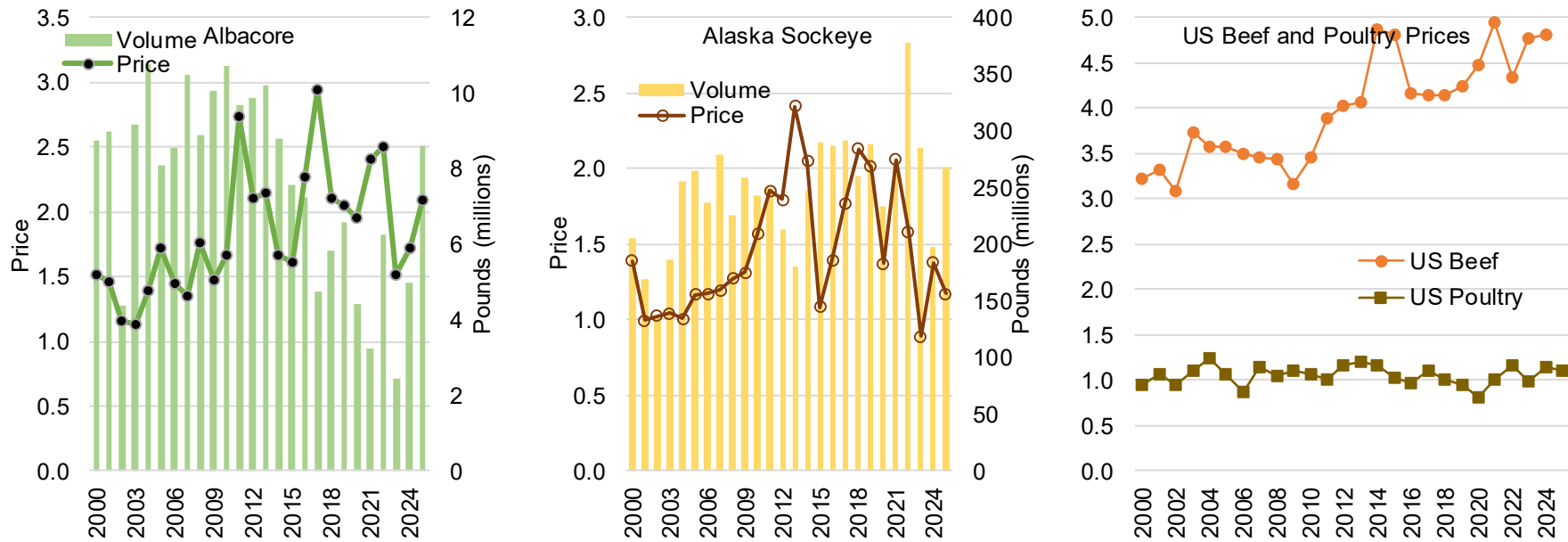


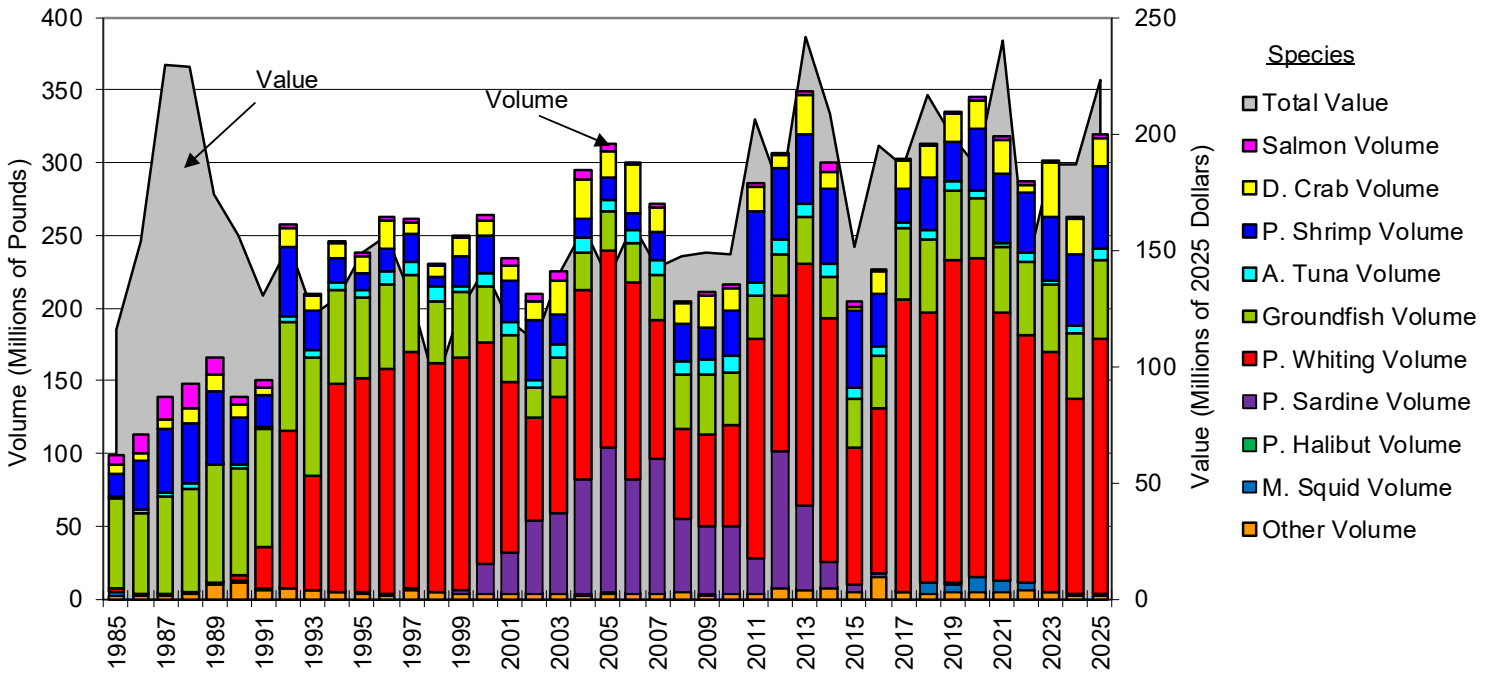
Figure 2 (cont.)



- Notes: 1. Prices are real 2025 dollars. Real dollar adjustment uses the GDPIPD.
 2. Oregon fisheries exclude offshore deliveries and aquaculture, and prices also exclude non-sales disposition up to 2023.
 3. Fisheries are shown for calendar year, including the Dungeness crab fishery.
 4. "Other groundfish" fishery excludes Pacific whiting and sablefish.
 5. Sablefish includes trawl and fixed gear.
 6. U.S. beef and poultry are based on wholesale prices for beef products and wholesale composite for chicken broilers.

- Sources: 1. U.S. West Coast fisheries from TRG (June 2024) and PacFIN APEX reports.
 2. Alaska sockeye up to 2024 from Alaska Department of Fish and Game (ADFG) "Ranked Statewide Salmon Graph by Report Type and Species" and 2025 from ADFG "2025 Preliminary Alaska Commercial Salmon Harvests and Exvessel Values," downloaded February 2026.
 3. U.S. beef and poultry from USDA, Economic Research Service, "Historical monthly price spread data for beef, pork, broilers," annual averages of months, downloaded February 2026.

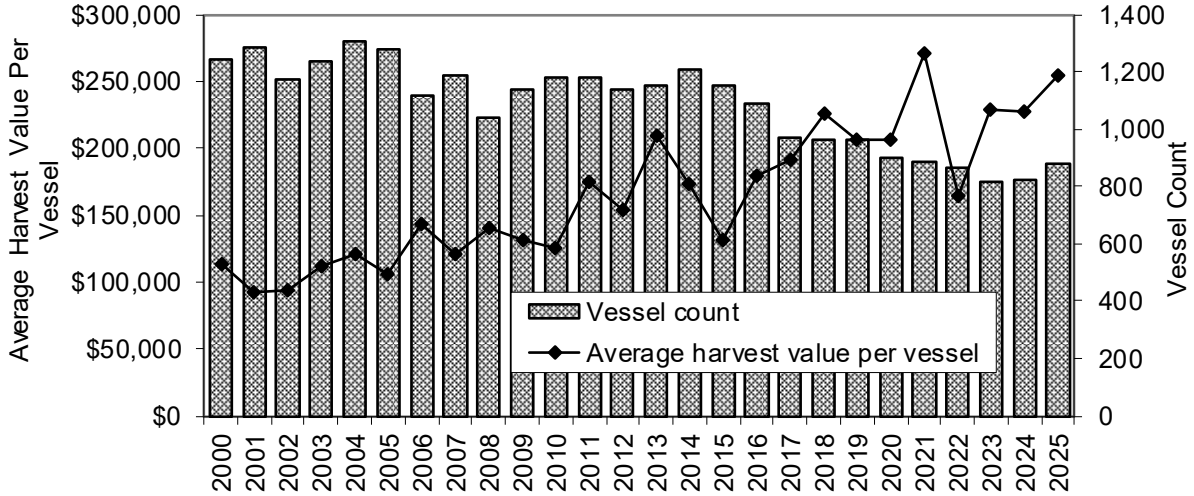
Figure 3
Onshore Landed Value and Volume by Major Fishery in 1985 to 2025



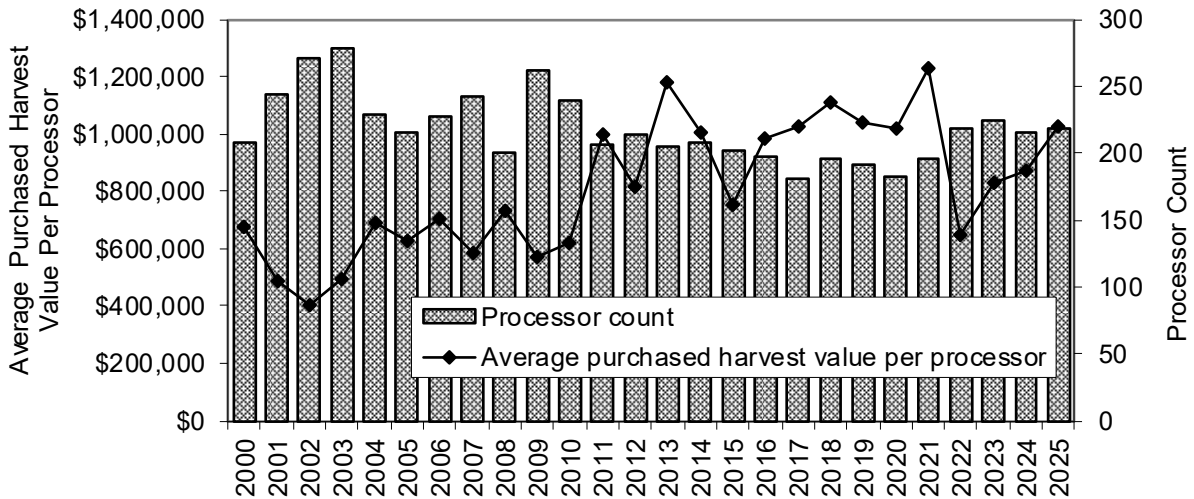
- Notes: 1. Values in 2025 dollars adjusted using the GDPIPD.
2. Notes and sources from volume Table A.1 concerning accounting periods and species composition also apply to this figure.

Figure 4
 Vessel and Processor Counts and Annual Average Harvest
 Value Per Vessel and Processor in 2000 to 2025

Vessel Counts and Annual Average Harvest Value Per Vessel

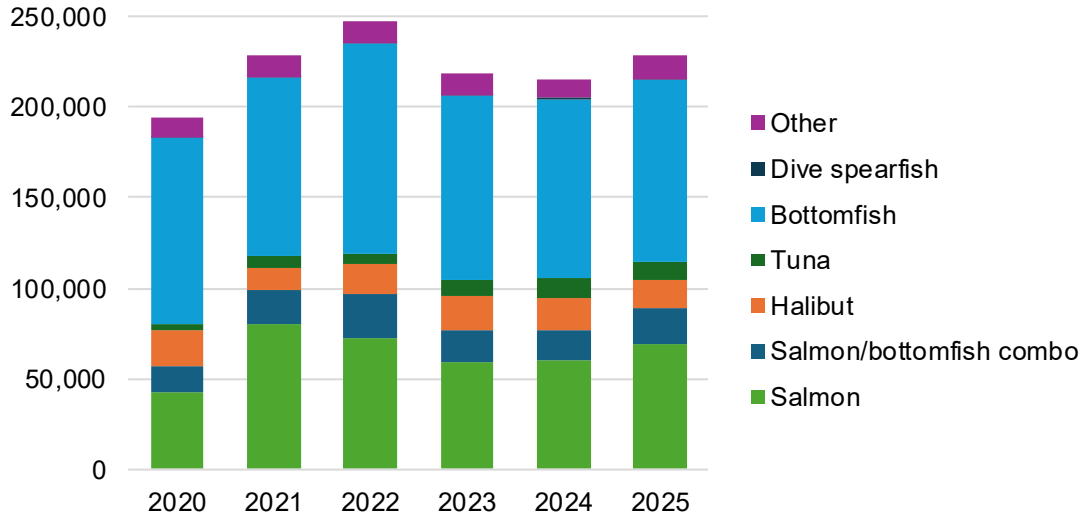


Processor Counts and Annual Average Purchased Harvest Value Per Processor



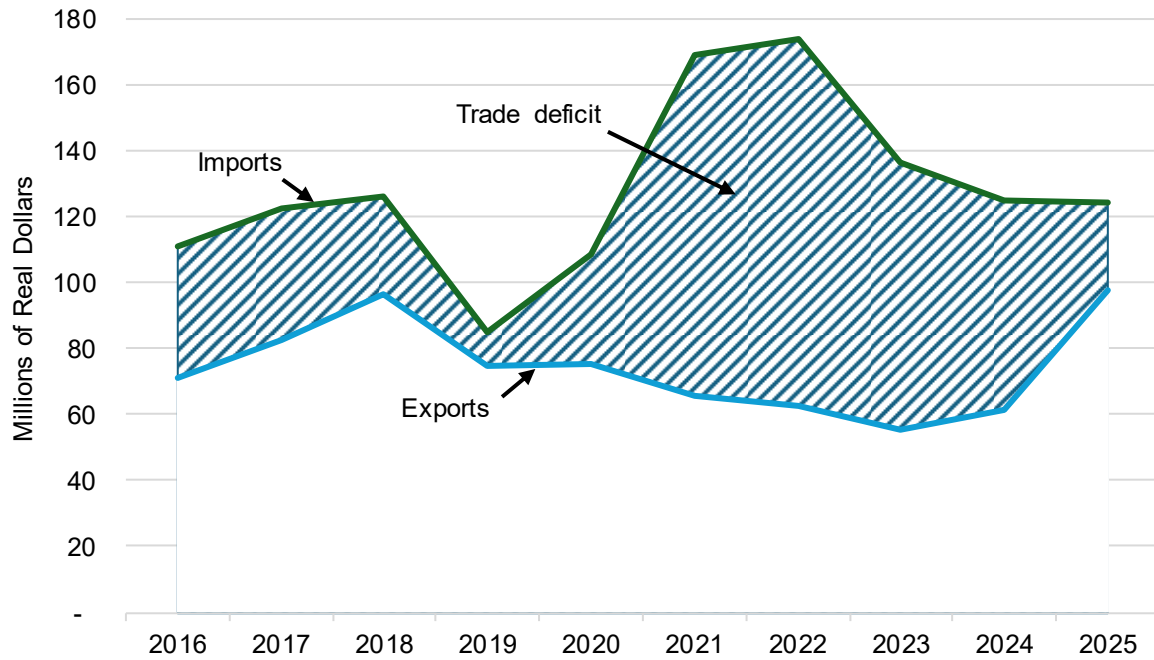
- Notes: 1. Values adjusted to 2025 dollars using the GDPIPD.
 2. Table B.2 notes and sources apply.

Figure 5
 Ocean Recreational Fisheries Trip Trends in 2020 to 2025



Notes: Table C.2 notes apply.
 Source: RecFIN March 25, 2026 extraction.

Figure 6
Oregon Seafood Imports and Exports in 2016 to 2025



- Notes: 1. Import and export values adjusted to 2025 real dollars using the GDPIPD.
 2. Commodity codes are NAICS 1125 (farmed fish and related products), 1141 (fish, fresh/chilled/frozen and other marine products), 3117 (seafood products, prepared, canned and packaged).
- Source: U.S. Census Bureau, Economic Indicators Division, Foreign Trade Statistics; International Trade Administration.

Bibliography

- Emmett, Robert, Richard Brodeur, Todd Miller, Susan Pool, Greg Krutzikowsky, Paul Bentley, and Jean McCrae. Pacific Sardine (*Sardinops sagax*) Abundance, Distribution, and Ecological Relationships in the Pacific Northwest. California Cooperative Oceanic Fisheries Investigations Reports. 2005.
- Leonard, J. and P. Watson. Description of the Input-Output Model for Pacific Coast Fisheries. U.S. Dept. Commerce, NOAA Tech. Memo. NMFS-NWFSC-111. 2011.
- Oregon Coast Visitors Association (OCVA). Oregon Coast Year 2021 Sources of Income Study, Briefing Report. Prepared by The Research Group, LLC. January 2024.
- Oregon Department of Fish and Wildlife (ODFW). Commission Meeting Exhibit C: Coastal Pelagic Species Fisheries Regulations, Background Report. June 16, 2023. Accessed https://www.dfw.state.or.us/agency/commission/minutes/23/06_Jun/index.asp. March 13, 2026.
- Oregon Department of Fish and Wildlife (ODFW). Oregon's Market Squid Fishery: Considerations for Implementing a Limited Entry System. Interim Report to the Oregon Fish and Wildlife Commission. August 2024.
- Oregon Department of Fish and Wildlife (ODFW). A History and Current Status of Oregon Ocean Salmon Fisheries, Troll Salmon Investigations. November 1976.
- Pacific Fishery Management Council. Review of 2025 Ocean Salmon Fisheries. February 2026.
- The Research Group, LLC (TRG). Oregon Commercial and Marine Recreational Fishing Industry Economic Activity for Years 2020 and 2021, Addendum 2023. Prepared for Oregon Department of Fish and Wildlife, Marine Reserve Program and Marine Resource Program. June 2024.
- The Research Group, LLC (TRG). Oregon's Commercial Fishing Industry, Year 2015 and 2016 Review. Prepared for Oregon Department of Fish and Wildlife, and Oregon Coastal Zone Management Association. September 2017.
- The Research Group, LLC and Hans Radtke. Oregon Seafood Supply Sources, Interim Technical Report from the Potential Economic Impact from Increasing Local Harvest Seafood Consumption on the Oregon Coast. Prepared for the Oregon Coast Visitor Association. May 2022.
- Scientific and Statistical Committee (SSC). Comments to the Pacific Fishery Management Council. Minutes from the PFMC SSC Meeting. November 2009.
- Scott, M. "A Fishery's Guide to Understanding Secondary Economic Impacts of Northwest Salmon and Steelhead." Paper presented at Making Economic Information More Useful

for Salmon and Steelhead Decision, a workshop sponsored by National Marine Fisheries Service, July 24-26, Seattle, Washington. NOAA Technical Memorandum NMFS F/NWR-8, National Marine Fisheries Service. Portland, Oregon. 1984.

Seung, Chang K. and Edward C. Waters. A Review of Regional Economic Models for Fisheries Management in the U.S. Marine Resource Economics. Volume 21, pp. 101–124. 2006.

Glossary

Acronyms

ADFG	Alaska Department of Fish and Game
BEA	U.S. Bureau of Economic Analysis
CFEC	Alaska Commercial Fisheries Entry Commission
CR	Columbia River
EIA	U.S. Energy Information Administration
ERS	U.S. Department of Agriculture, Economic Research Service
FEAM	Fisheries Economic Assessment Model
GDPIPD	Gross Domestic Product Implicit Price Deflator
IO-PAC	input-output model for Pacific Coast fisheries
ITA	International Trade Administration
NEPA	National Environmental Policy Act
NMFS	National Marine Fisheries Service
NWFSC	Northwest Fisheries Science Center
OCVA	Oregon Coast Visitors Association
ODA	Oregon Department of Agriculture
ODFW	Oregon Department of Fish and Wildlife
ORBS	Ocean Recreational Boat Survey
PacFIN	Pacific Fisheries Information Network
Port group	AST - Astoria, TIL - Tillamook, NPT - Newport, CSB - Coos Bay, PRD - Port Orford, BRK - Brookings
PFMC	Pacific Fishery Management Council
PSMFC	Pacific States Marine Fisheries Commission
RecFIN	Recreational Fisheries Information Network
TRG	The Research Group, LLC
USCB	U.S. Census Bureau, Economic Indicators Division, Foreign Trade Statistics
USDA	U.S. Department of Agriculture

Data Provenance

- 1) Annual landing data from APEX reports supplemented with ODFW commercial fish landing reports.
- 2) Vessel and processor activity counts from PacFIN legacy table "fusport."
- 3) Recreational effort and catch from RecFIN.
- 4) Area income from BEA.
- 5) Alaska earnings by permit residency from CFEC
- 6) Alaska crewmember licenses from ADFG.
- 7) Alaska boat licenses from CFEC.
- 8) Columbia River salmon landings from PFMC.
- 9) Aquaculture production in Oregon estuaries from ODA and USDA.
- 10) Economy response coefficients from NWFSC IO-PAC.

- 11) Protein price comparisons for U.S. beef and poultry from ERS.
- 12) Imports and exports from USCB and ITA.

Terms

Angler day	Sometimes the word "trip" is used in this report's narrative, but the unit of measurement for effort is an angler day. Trip expenditures for overnight lodging is factored into the average angler day spending. The hours actually spent fishing in a calendar day are not a consideration. The amount of money spent for the fishing experience is not appreciably different whether fishing was for a few or many hours. Literature use of the word trip is usually associated with a fishing experience duration that may be more or less than a calendar day. Trip counts in this study have been adjusted to account for multiple days when fishing occurred during a single trip.
Directed fishery	A directed fishery is a fishing activity that specifically targets a species or species group via choice of gear, location, and season. For compilation of vessel and delivery counts, a plurality of trip revenue within a defined fishing strategy was used as a filter. The resulting catch is the opposite of incidental catch where the species was not targeted. Regulations will both prohibit and allow retention of incidental catch. For example, halibut generally cannot be retained in the commercial groundfish trawl fishery. Retention allowance can be on a ratio basis such as one halibut per two Chinook in the salmon troll fishery.
Distant water fisheries	The distant water fisheries are the West Coast offshore fishery, Alaska fisheries, western Pacific highly migratory species fishery, fisheries in Washington and California, and elsewhere. Revenue generated from vessel deliveries in Oregon is referenced in this report as "onshore." Revenue returned to Oregon in the form of wages and salaries or profits and revenue derived from expenditures made in Oregon for repairs, provisioning, or moorage is referenced in this report as "distant water" fisheries revenue. For example, the revenue generated from the at-sea deliveries for the Pacific whiting fishery is categorized as distant water fishery revenue. Another example is Oregon residents own harvesting permits in Alaska, but keep vessels year around at Alaska ports. Sometimes owners will lease permits for others to harvest the permit quota shares. Distant water fisheries income can be centered at coastal communities where businesses sell goods and services to participants and the business labor has residency in those communities. Some income for distant water fisheries is directly returned to Oregon via crewmember and permit/vessel owner participant earnings. Participants may live on the Oregon Coast or elsewhere in Oregon.

Dollar adjustments	Where dollar values are noted to be real, the adjustment index was the Gross Domestic Product Implicit Price Deflator (GDPIPD) developed by the U.S. Bureau of Economic Analysis.
Economic contribution	<p>Economic contributions include effects of harvesting and primary processing. The estimates include direct, indirect, and induced impacts, therefore include "multiplier effects." New fishing vessel construction, fishery management, and fishery research and education are not included.</p> <p>An economic contribution metric relates to a short-term perspective for how an industry is represented in the local economy. If there is a change in the economy's industry activity, there may very well be adjustments in the longer term that may cause increased economic contributions. For example, a tourism business start-up may replace a fishing industry business closure.</p> <p>Economic contributions and economic impacts are sometimes used interchangeably in literature. Other authors will differentiate the two terms - the latter being reserved for defining a short term disruption in economic activity. An example would be the lost commercial fishing economic activity due to implementing marine reserves if there was no replacement activity.</p> <p>The economic contribution measurements selected for this study are income, jobs, and output. It could just as well have been other metrics that would describe the same economic direct and secondary effects, but in a different dimension. Other example metrics are value added (analogous to gross domestic product) and taxes generated.</p>
Economic modeling	<p>Prior to 2016, the model used to calculate economic contributions was the Fisheries Economic Assessment Model (FEAM). The FEAM was originally developed by Hans Radtke and William Jensen for the West Coast Fisheries Development Foundation in 1988. The estimates include direct, indirect, and induced impacts, therefore include "multiplier effects." The FEAM relies on response coefficients from IMPLAN to estimate household income generated from harvester and processor activities. The FEAM has been useful because much of the commercial fishing industry information is not described in published employment data. Participants are mostly contractors that are not covered in employment insurance programs and do not show up in employment by industry data. They are included in BEA data in the general self-employed category. The Research Group, LLC updated the FEAM periodically using new fleet and processor structural information, changed industry cost-earnings profiles, and new data IMPLAN models. The FEAM methods are described in Seung and Waters (2006). Application of the FEAM adjusts fisheries' multipliers to the current year's harvest prices. IMPLAN is a product of IMPLAN Group LLC, 16740 Birkdale Commons Parkway, Suite 212, Huntersville, NC 28078.</p>

Starting in 2016, the economic model used to calculate economic contributions is the input-output model for Pacific Coast fisheries (IO-PAC), which is maintained by the NMFS Northwest Fisheries Science Center. The model was designed to estimate the changes in economic contributions and economic impacts resulting from policy, environmental, or other changes that affect fishery harvest. IO-PAC was built by customizing IMPLAN software. The development and design of IO-PAC is documented in detail in Leonard and Watson (2011). Discussions about the similarities and differences between FEAM and IO-PAC are found in SSC (2009). The PFMC now uses the IO-PAC instead of the FEAM for analyzing management alternatives.

Basic economic impact analysis attempts to sort out the driving economic activities in regional economies (Scott 1984). Local industries with markets outside of the region bring new money into the region and are called basic industries. Industries with markets within the region are called secondary or support industries. Thus, when there is an increase in spending in basic industries, there is a resultant increase in secondary industries. Trade leakage occurs when spending and respending for labor, supplies, and services occurs outside the region. The relationship between an activity's total impact on the region's economy that includes the effect from the secondary industries, and the basic industry, is known as the "multiplier effect." In the vernacular of input-output modeling terminology, the total impact on an economy included the direct, indirect, and induced effects of the activity. Economic contribution results are reported at the coastwide and statewide economy level. The statewide income and output measured economic contribution will be higher because of reduced trade leakage. See glossary description of jobs for an explanation why statewide equivalent jobs may be lower than coastwide. One-off capital purchases and construction type projects are precluded in the economic contribution modeling.

Effort	Effort (or fishing effort) refers to the total amount of fishing activity exerted in a specific area over a defined period. A commercial fishing example is trip counts per year. A recreational fishing example is angler day counts per year. A subset of effort is the measure of fishing intensity or pressure. Intensity includes the dimension of a fishery (defined by species, gear, or permit) and/or geographic area.
Harvester and processor revenue	Harvest value and price (sometimes called ex-vessel revenue) is the amount paid to fishers at the time of fish delivery to processors or when sold directly to the public. The term is analogous with farm-gate value which is revenue received by growers for agricultural products. The term ex-processor revenue is from the wholesale price fetched by processors for manufactured seafood products.

Output	<p>Industry output is a technical term that is not perfectly analogous to sales. It is a measure of annual production with only the margins of some sectors included. For manufacturers, the value would be sales plus/minus change in inventory. For service sectors production would be sales. For retail, wholesale, and transportation, output is margins. Margins represent the value in delivering commodities from producers' establishments to purchasers. The output measurement tends to convey an inflated notion of economic activity by including non-local cash flows and is subject to double counting. The term does not provide meaningful insight on what might be a change to the size of the economy. It is often referred to as a measure of total economic activity. For understanding change and using measures to compare alternative actions or policies, the more appropriate terms are income and jobs.</p>
Income	<p>Income accrues to households in the form of net earnings (sometimes called earned income) from wages, salaries, proprietorship income, etc. For example, it can include the contract payments based on share of catch value that is paid to a commercial fishing vessel crewman/skipper and the net income after operating and fixed expenses for the vessel owner. Total household income would include other sources such as transfer payments (e.g. social security, unemployment insurance, etc.) and investments (e.g. rental income, dividends, interest, etc.). There can be small differences between total income in area that is from households and the area's total personal income because of how BEA calculates the income.</p>
Jobs	<p>Statewide and regional average annual earnings per job are computed by dividing the economies all industry earned income estimates by total full-time and part-time jobs estimates. Average earnings per job within industries involving more part-time work is lower than industries involving more full-time work, although there could be little difference in the underlying wage of full-time workers. Since average earnings per job are just a simple average, it does not account for variations in the distribution of earnings among high-pay vs. low pay jobs. Jobs at the statewide level include jobs within all coastal communities plus jobs in the rest of the state. Since average earnings statewide are much higher than coastwide, the reported statewide jobs may be lower than coastwide despite income being higher.</p> <p>The Oregon Employment Department annually estimates direct employment for the harvest and processor sectors. The estimating methods using survey data and harvest deliveries are necessary since harvest sector captain and crew positions are exempt from unemployment insurance coverage programs. Moreover, processor worker positions are sometimes provided by temporary labor service firms which do not report employment in a seafood industry category.</p>

Multiplier effect	Basic economic impact analysis attempts to sort out the driving economic activities in regional economies (Scott 1984). Local industries with markets outside of the region bring new money into the region and are called basic industries. Industries with markets within the region are called secondary or support industries. Thus, when there is an increase in spending in basic industries, there is a resultant increase in secondary industries. Trade leakage occurs when spending and respending for labor, supplies, and services occurs outside the region. The relationship between an activity's total impact on the region's economy that includes the effect from the secondary industries, and the basic industry, is known as the multiplier effect. In the vernacular of input-output modeling terminology, the total impact on an economy included the direct, indirect, and induced effects of the activity.
Commercial fishing trips	Trip counts are approximated using the proxy fish ticket counties. A fish ticket must be issued for every landing (fish or shellfish) a vessel makes no matter if it is a sale to the public or a purchase by a processor. Ticket counts may not reflect fishing trips. Multiple tickets can be issued for a single trip when a vessel delivers to more than one dealer after returning to port, and vessels issue tickets when a sale is made directly to the public. Trip undercounts could occur in the occasion when tendering services are used because more than one vessel's harvest could be combined onto a single fish ticket. Despite these nuances, this report references a commercial fishing trip to a delivery.
Recreational fishing trips	Sometimes the word "trip" is used in this report's narrative, but the unit of measurement for effort is an angler day. The hours actually spent fishing in a calendar day are not a consideration. The amount of money spent for the fishing experience is not appreciably different whether fishing was for a few or many hours. Literature use of the word trip is usually associated with a fishing experience duration that may be more or less than a calendar day. The data source for ocean trips is ORBS via the RecFIN Program. ORBS is a sampling program for boat trips. An angler day is the result of counting the anglers on the boat trip and expanding the sampled trips to represent all ocean fishing trips.
Recreational fishing mode	The mode can be charter boat, private boat, shore/bank fishing, or diving. A charter boat is owned by a private business which provides for-hire services on daily and fishing season schedules. The services are usually recreational fishing, but can for non-angling trips such as whale watching or just touring. The boat may make more than one trip per day depending on the distance to fishing grounds. Private boats do not provide for-hire services, although it is not uncommon that friends and relatives on the trip contribute to cost reimbursement. Shore/bank fishing distinguishes an angling trip when the fishing opportunity will not rely on a boat. It can occur on piers and water shorelines. Dive trips can originate from a boat or shore. There are very few

ocean bank or dive fishing trips in Oregon and they are not included in the analysis.

Recreational target fishery Trips are categorized by which species groups comprise retained catch. If there is a plurality of groups in the catch, then assumptions are made which group defines the target category. For example, trips resulting in a catch of both salmon and bottomfish are in the salmon category. The data source for ocean trips identifies trips when crabbing occurred. However, most of the those trips are made in combination with other target fisheries. It is assumed the finfish catch in the other fisheries defines the target category.

Port group The following table lists the major ports, acronyms, Census Bureau geographic areas (cities, counties, and zip code areas), and river/streams that are mapped to port groups. Area economic data is used for showing commercial fisheries (distant water fisheries are included) representation in local economies. Demographic and well-being data is used to show an area's commercial (distant water fisheries are excluded) and recreational fisheries engagement. Both measures have their unique purpose in showing the importance of fisheries in an area and how different Oregon Coast areas contrast. Discussions of fisheries importance include showing historical trends and variability for the measures.

Port Group	Area Economic Data	Cities and Source of Demographic/Well-being Data	Major Rivers and Streams
Astoria (AST)	Clatsop County	Astoria, Hammond/Warrenton, Gearhart, Seaside, and Cannon Beach. Clatsop County used for Census Bureau data.	Columbia, Klaskanine, Lewis and Clark, Youngs, and Necanicum rivers; Big Creek, Gnat Creek, and Bear Creek
Tillamook (TIL)	Tillamook County	Tillamook, Garibaldi, Netarts, and Pacific City. Tillamook County used for Census Bureau data.	Tillamook, Kilchis, Miami, Nehalem, Nestucca, Trask, and Wilson rivers
Newport (NPT)	Lincoln County	Newport and Depoe Bay. Lincoln County plus ZIP code 97439 used for Census Bureau data.	Yaquina, Siletz, Alsea, and Salmon rivers; Big Elk Creek, Drift Creek
Coos Bay (CSB)	Coos County	Coos Bay, Florence, Winchester Bay, and Charleston. Coos County plus ZIP code 97467 used for Census Bureau data.	Siuslaw, Umpqua, Smith, Coos, Slough
Port Orford (PRD)		Port Orford. ZIP codes 97465, 97476, and 97450 used for Census Bureau data.	Elk and Sixes rivers
Brookings (BRK)	Curry County	Brookings and Gold Beach. Curry County less Port Orford ZIP codes used for Census Bureau data.	Chetco and Rogue rivers

(This page is intentionally blank for printing purposes.)

Appendix A

Statewide Landing Volume, Value, and Price Trends

(This page is intentionally blank for printing purposes.)

Table A.1
Onshore Landed Volume by Major Fishery in 1985 to 2025

Year	Salmon	D. Crab	P. Shrimp	A. Tuna	Groundfish	P. Whiting	P. Sardine	P. Halibut	M. Squid	Other	Total
1985	6,570	7,358	14,840	1,518	61,920	1,950	--	813	1,752	2,525	99,245
1986	13,792	4,658	33,884	2,461	54,883	927	--	1,314	26	1,573	113,517
1987	15,094	5,991	44,589	2,288	67,176	403	--	916	0	1,925	138,383
1988	17,789	9,417	41,846	3,967	70,495	543	--	582	0	3,486	148,126
1989	11,724	11,676	49,129	1,080	81,047	196	--	916	96	9,544	165,408
1990	5,412	9,510	31,883	2,079	73,305	5,058	--	622	--	11,033	138,903
1991	5,344	4,924	21,711	1,259	80,847	29,109	--	544	0	6,136	149,875
1992	2,364	11,908	48,033	3,896	75,215	107,939	9	712	13	6,731	256,820
1993	1,848	10,456	26,923	4,754	81,303	78,970	1	663	131	5,246	210,294
1994	1,285	10,638	16,386	4,698	64,265	143,563	0	540	233	3,993	245,602
1995	2,862	11,954	12,106	5,034	55,066	147,355	--	543	246	3,408	238,574
1996	2,842	19,302	15,727	8,948	57,002	155,590	0	310	229	2,501	262,452
1997	2,245	7,777	19,560	9,168	52,703	162,782	0	377	271	5,996	260,877
1998	1,978	7,410	6,096	10,603	41,806	157,895	2	237	19	4,356	230,402
1999	1,560	12,347	20,451	4,553	44,119	160,965	1,710	350	2	3,337	249,394
2000	3,142	11,180	25,462	8,757	39,311	151,461	21,005	331	13	2,761	263,423
2001	5,266	9,690	28,482	8,959	31,645	117,673	28,176	253	4	3,523	233,671
2002	6,119	12,444	41,584	4,362	21,102	71,220	50,069	529	4	2,680	210,112
2003	6,722	23,930	20,546	9,165	25,934	80,648	55,683	342	27	2,635	225,632
2004	5,936	27,273	12,207	10,754	25,590	130,238	79,610	345	43	2,220	294,217
2005	4,688	17,730	15,784	8,087	27,231	135,503	99,450	357	32	3,577	312,439
2006	1,814	33,316	12,195	8,536	27,395	135,186	78,634	251	60	3,156	300,543
2007	1,384	17,026	20,125	10,468	30,881	94,360	92,911	244	1	3,596	270,997
2008	1,923	13,888	25,520	8,864	37,922	61,466	50,593	243	0	4,345	204,765
2009	2,312	21,854	22,153	10,072	41,400	62,988	47,357	234	0	2,442	210,811
2010	2,774	15,868	31,463	10,700	36,855	69,530	45,971	186	17	3,253	216,618
2011	2,422	17,260	48,314	9,682	28,936	151,464	24,302	217	0	3,222	285,821
2012	1,927	8,666	49,144	9,886	28,475	107,652	93,957	197	0	6,811	306,716
2013	3,513	26,073	47,629	10,205	31,111	167,499	57,956	205	0	5,198	349,390
2014	6,414	11,915	51,960	8,777	28,375	168,226	17,171	206	1	7,318	300,362
2015	3,159	2,287	53,516	7,577	32,976	94,907	4,699	263	--	4,502	203,885
2016	1,844	15,716	35,528	7,250	35,716	113,035	9	248	2,778	14,793	226,918
2017	1,196	19,016	23,057	4,745	48,374	201,499	3	269	0	4,196	302,355
2018	980	23,137	35,873	5,812	51,167	185,554	20	231	7,046	3,399	313,219
2019	1,005	19,035	26,852	6,571	48,431	222,202	28	252	5,248	4,817	334,441
2020	1,553	19,895	43,133	4,420	41,071	219,617	1	255	10,297	4,370	344,611
2021	1,790	24,301	46,670	3,223	45,360	184,089	26	255	7,838	4,241	317,792
2022	2,158	4,925	41,218	6,267	50,045	170,337	16	254	5,521	5,774	286,515
2023	1,751	37,182	44,148	2,451	46,774	164,005	3	309	0	4,733	301,355
2024	1,887	23,927	49,439	4,984	44,433	134,999	--	237	407	2,384	262,698
2025	2,252	19,032	57,027	8,591	53,212	175,662	--	263	1,298	1,970	319,308
Avg20-24	1,828	22,046	44,922	4,269	45,537	174,609	9	262	4,813	4,300	302,594

- Notes:
1. Landings are reported in thousands of round pounds. Landing data is preliminary for 2024 to 2025.
 2. Salmon includes landings of steelhead, which have come exclusively from the tribal fisheries since 1975.
 3. D. crab includes only Dungeness crab; p. shrimp includes only pink shrimp; and a. tuna includes only albacore tuna. Landings are during calendar year, including the Dungeness crab fishery.
 4. Pacific whiting (also known as hake) did not emerge as a major fishery species until after 1990. Groundfish in 2025 includes (thousands of round pounds) flatfish (10,192), sablefish (16,018), thomyheads (390), rockfish other than thomyheads (24,345), cods other than sablefish (1,181), and other (1,086).
 5. Biological studies have found the northern population of the Pacific sardine has a three decade or so abundance cycle, and did not emerge as a major fishery species until 2000 in the latest cycle.
 6. 'Other' in 2025 includes landings (thousands of round pounds) of jack mackerel (507), unspecified squid (309), and other species (1,154). Shellfish volume excludes aquaculture production.

Sources: TRG (June 2024) and PacFIN APEX report ALL001 downloaded January 2026.

Table A.2
Onshore Landed Value by Major Fishery in 1985 to 2025

Year	Price	Salmon		D. Crab		Pink Shrimp		Albacore Tuna		Groundfish		P. Whiting		P. Sardine		P. Halibut		Market Squid		Other		Total	
	Index	Real	Nominal	Real	Nominal	Real	Nominal	Real	Nominal	Real	Nominal	Real	Nominal	Real	Nominal	Real	Nominal	Real	Nominal	Real	Nominal	Real	Nominal
1985	39.4	22,964	9,056	27,014	10,654	13,277	5,236	2,077	819	42,920	16,927	439	173	--	--	2,025	798	808	319	4,069	1,605	115,592	45,587
1986	40.2	37,730	15,181	16,370	6,587	45,060	18,131	3,293	1,325	43,128	17,353	149	60	--	--	4,670	1,879	7	3	3,360	1,352	153,767	61,871
1987	41.2	65,476	26,994	20,256	8,351	73,430	30,273	4,074	1,680	59,071	24,353	83	34	--	--	3,453	1,423	0	0	3,849	1,587	229,693	94,696
1988	42.7	91,418	39,020	26,428	11,280	40,179	17,150	7,798	3,328	56,305	24,033	96	41	--	--	2,054	877	0	0	4,413	1,883	228,692	97,612
1989	44.4	32,077	14,228	30,578	13,564	40,367	17,905	1,999	887	56,859	25,221	33	15	--	--	2,934	1,301	17	8	9,149	4,058	174,014	77,187
1990	46.0	20,800	9,573	31,623	14,554	33,959	15,629	3,832	1,764	50,295	23,147	477	220	--	--	2,421	1,114	--	--	12,405	5,709	155,811	71,710
1991	47.6	12,250	5,828	15,685	7,462	25,384	12,076	2,058	979	60,569	28,814	2,880	1,370	--	--	2,148	1,022	0	0	9,525	4,531	130,501	62,083
1992	48.7	7,577	3,687	27,514	13,388	35,322	17,187	8,156	3,969	54,966	26,745	10,437	5,078	--	--	1,701	828	3	2	6,624	3,223	152,301	74,106
1993	49.8	4,869	2,425	23,885	11,898	17,890	8,912	7,794	3,883	55,485	27,638	4,596	2,289	--	--	1,731	862	63	31	5,863	2,921	122,176	60,859
1994	50.9	2,869	1,459	28,428	14,462	18,922	9,626	7,371	3,750	56,550	28,769	8,448	4,298	--	--	1,995	1,015	70	36	4,416	2,247	129,068	65,662
1995	51.9	6,880	3,574	38,590	20,044	16,556	8,599	7,797	4,050	59,631	30,974	13,477	7,000	--	--	1,812	941	80	41	4,319	2,243	149,142	77,467
1996	52.9	6,217	3,288	49,497	26,180	17,700	9,362	14,047	7,430	57,240	30,275	7,840	4,147	--	--	1,330	704	70	37	2,272	1,202	156,214	82,623
1997	53.8	5,151	2,772	27,201	14,636	14,701	7,910	13,644	7,342	52,014	27,987	12,680	6,823	--	--	1,293	695	92	49	2,523	1,358	129,299	69,573
1998	54.4	4,761	2,590	23,013	12,519	5,862	3,189	12,023	6,540	35,828	19,491	6,905	3,756	1	1	595	323	7	4	2,925	1,591	91,919	50,005
1999	55.2	3,702	2,042	41,889	23,107	17,350	9,571	6,859	3,784	40,229	22,192	10,727	5,917	156	86	1,255	692	0	0	1,903	1,050	124,070	68,441
2000	56.4	7,141	4,029	42,020	23,709	18,064	10,192	13,272	7,489	43,195	24,373	10,778	6,081	2,036	1,149	1,237	698	4	2	3,562	2,010	141,308	79,732
2001	57.7	10,128	5,847	33,428	19,296	13,097	7,560	13,094	7,559	35,349	20,405	7,158	4,132	2,804	1,619	835	482	1	1	3,837	2,215	119,733	69,116
2002	58.6	11,834	6,933	35,434	20,761	19,376	11,353	5,038	2,952	24,253	14,210	5,495	3,219	4,812	2,819	1,730	1,013	1	1	3,223	1,888	111,195	65,149
2003	59.8	14,840	8,869	62,107	37,117	8,452	5,051	10,323	6,169	29,572	17,673	6,095	3,642	4,921	2,941	1,440	860	12	7	1,935	1,156	139,695	83,487
2004	61.4	21,179	12,995	70,004	42,954	7,726	4,740	14,903	9,145	26,633	16,342	7,563	4,641	7,937	4,870	1,426	875	11	7	1,893	1,161	159,275	97,730
2005	63.3	16,496	10,438	42,034	26,597	10,907	6,901	13,932	8,816	29,198	18,475	11,232	7,107	9,797	6,199	1,415	896	12	7	2,418	1,530	137,440	86,965
2006	65.2	7,572	4,940	82,470	53,807	6,889	4,494	12,365	8,067	30,551	19,933	12,222	7,974	5,737	3,743	1,175	766	24	16	1,825	1,191	160,829	104,931
2007	67.0	6,956	4,662	57,008	38,202	13,975	9,365	14,129	9,468	30,588	20,497	9,701	6,501	6,791	4,551	1,267	849	0	0	2,049	1,373	142,465	95,468
2008	68.3	6,210	4,240	42,717	29,164	20,417	13,939	15,600	10,651	39,465	26,943	10,004	6,830	8,298	5,665	1,326	905	--	--	2,947	2,012	146,983	100,349
2009	68.7	5,157	3,544	61,703	42,404	9,914	6,813	14,812	10,179	40,939	28,135	5,413	3,720	7,698	5,291	976	670	--	--	2,364	1,624	148,976	102,380
2010	69.5	11,069	7,698	47,086	32,746	15,792	10,982	17,862	12,422	36,852	25,629	7,785	5,414	7,552	5,252	1,065	740	--	--	3,035	2,111	148,097	102,996
2011	71.0	9,492	6,737	62,961	44,690	34,668	24,607	26,438	18,766	40,067	28,439	23,271	16,518	4,496	3,192	1,607	1,141	0	0	3,375	2,395	206,375	146,485
2012	72.3	9,577	6,925	40,264	29,114	34,140	24,685	20,852	15,077	32,963	23,834	20,206	14,611	12,415	8,977	1,334	965	--	--	3,019	2,183	174,768	126,370
2013	73.6	16,882	12,418	96,808	71,209	32,835	24,153	21,859	16,079	30,347	22,322	27,740	20,405	8,564	6,299	1,336	982	--	--	4,798	3,529	241,169	177,396
2014	74.8	26,890	20,124	64,124	47,988	39,186	29,326	14,730	11,023	29,143	21,810	24,418	18,274	4,706	3,522	1,535	1,149	1	0	3,889	2,911	208,623	156,127
2015	75.5	15,716	11,864	15,780	11,912	53,534	40,413	12,203	9,212	38,135	28,788	9,466	7,146	1,077	813	1,878	1,418	--	--	3,589	2,709	151,378	114,274
2016	76.2	10,901	8,308	73,131	55,735	32,926	25,093	16,404	12,502	41,972	31,988	11,407	8,694	0	0	1,827	1,392	1,471	1,121	4,857	3,702	194,898	148,536
2017	77.6	7,160	5,556	75,678	58,728	16,350	12,688	13,921	10,803	45,968	35,673	21,114	16,385	0	0	1,820	1,413	--	--	3,798	2,947	185,809	144,193
2018	79.4	7,007	5,562	93,237	74,012	33,899	26,909	12,248	9,723	39,859	31,640	20,704	16,435	4	3	1,550	1,230	3,872	3,073	4,210	3,342	216,591	171,929
2019	80.7	5,187	4,185	84,184	67,930	24,712	19,940	13,454	10,856	34,927	28,183	26,916	21,719	5	4	1,548	1,249	3,576	2,886	4,190	3,381	198,698	160,334
2020	81.8	6,228	5,094	89,027	72,816	27,622	22,593	8,625	7,054	22,566	18,457	18,606	15,218	--	--	1,450	1,186	7,336	6,000	4,050	3,313	185,509	151,731
2021	85.5	7,632	6,526	140,354	120,011	27,320	23,360	7,737	6,616	26,360	22,540	20,441	17,479	2	2	1,847	1,579	5,315	4,545	3,221	2,754	240,230	205,410
2022	91.6	8,367	7,664	34,326	31,442	20,513	18,789	15,663	14,347	33,017	30,243	20,647	18,913	0	0	1,724	1,579	3,686	3,377	4,595	4,209	142,539	130,564
2023	95.0	5,522	5,245	109,647	104,139	19,713	18,723	3,712	3,525	27,660	26,270	15,714	14,924	0	0	1,693	1,608	--	--	2,652	2,519	186,312	176,954
2024	97.3	7,493	7,293	102,272	99,549	27,356	26,628	8,541	8,313	22,506	21,907	15,139	14,736	--	--	1,279	1,245	268	261	1,947	1,895	186,800	181,826
2025	100.0	10,388	10,388	107,469	107,469	29,479	29,479	17,914	17,914	31,711	31,711	21,666	21,666	--	--	1,885	1,885	784	784	1,995	1,995	223,291	223,291
Avg20-24		7,048		95,125		24,505		8,855		26,422		18,109		0		1,598		3,321		3,293		188,278	

- Notes:
- Nominal value is the revenue received by fishermen/harvesters in the landing year. Real value is in thousands of 2025 dollars adjusted using the GDPIPD.
 - Groundfish in 2025 includes landings (real ex-vessel value in thousands) of sablefish (\$15,112), flatfish (\$7,236), thornyheads (\$170), rockfish other than thornyheads (\$6,983), cods other than sablefish (\$1,845), and other (\$367). 'Other' in 2025 includes (real ex-vessel value in thousands) bay clams (\$867 including basket, butter, gaper), razor clam (\$390), red sea urchin (\$352), and other species (\$386). Shellfish value excludes private lands harvest.
 - Notes and sources from volume table concerning species composition also apply to this table.

Table A.3
Fisheries Annual Ex-Vessel Prices by Selected Species and Species Groups in 1971 to 2025

Species	1971	1973	1975	1977	1979	1981	1983	1985	1987	1989	1991	1993	1995	1997	1999	2001	2003	2005	2007	2009	2011	2013	2014	2015	2016	2017	2018	2019	2020	2021	2022	2023	2024	2025	
Troll Chinook (ocean)	3.60	5.67	4.85	9.06	9.25	6.67	4.52	5.48	5.50	4.37	4.52	3.81	2.84	2.58	3.06	2.43	2.88	4.38	7.34	6.34	7.30	6.95	6.63	7.08	9.38	8.98	9.21	7.18	8.93	10.21	8.36	8.35	9.44	8.11	
Troll coho (ocean)	2.20	4.33	3.61	5.57	8.13	4.33	2.26	3.32	3.64	2.09	1.81	1.98	-	-	1.62	1.19	1.24	2.57	2.47	2.58	2.45	3.03	2.33	2.14	-	3.40	4.00	2.87	3.50	4.19	2.90	3.14	3.42	3.09	
Net Chinook (below Bonneville Dam)															2.56	2.45	1.41	2.65	4.96	2.96	3.48	3.50	2.48	3.57	4.83	5.52	7.41	5.04	3.31	4.22	3.49	3.87	3.36	4.18	
Spring															5.14	5.07	4.69	5.52	8.32	7.00	6.91	8.61	7.13	7.51	9.37	9.71	13.23	14.19	8.82	10.94	6.08	8.78	8.77	9.16	
Fall															2.02	1.12	1.10	2.40	3.86	2.83	2.99	3.18	2.29	2.89	3.95	3.91	4.06	3.19	3.14	3.54	2.88	2.90	3.15	3.54	
Net Chinook (above Bonneville Dam)															0.98	0.71	0.43	0.96	3.04	1.94	1.94	2.84	2.42	2.98	3.80	4.52	5.12	3.66	3.18	3.68	2.08	1.95	2.59	3.83	
Spring															-	2.22	1.83	2.68	5.59	4.47	4.93	6.26	6.31	5.28	7.07	7.12	9.15	6.89	6.87	7.66	5.46	6.44	6.17	7.47	
Fall															1.03	0.42	0.32	0.91	3.08	1.57	1.11	2.60	1.97	2.54	3.22	4.13	4.40	3.40	2.90	3.06	1.81	1.72	2.43	3.53	
Net coho (below Bonneville Dam)															1.52	0.49	0.90	1.68	2.43	1.73	2.26	2.48	1.54	2.03	2.41	2.62	2.41	2.15	2.03	2.21	1.90	1.45	1.59	1.77	
Net steelhead (above Bonneville Dam)															0.75	0.27	0.13	0.44	0.98	0.89	1.59	1.46	1.48	1.76	1.85	2.78	3.55	1.97	1.96	1.75	1.75	1.64	1.73		
Dungeness crab	1.73	3.15	3.71	2.27	2.65	2.87	4.02	3.67	3.38	2.62	3.19	2.29	3.24	3.51	3.39	3.45	2.60	2.37	3.35	2.82	3.65	3.72	5.39	6.94	4.66	3.99	4.04	4.43	4.49	5.80	7.00	2.96	4.27	5.65	
Pink shrimp	0.74	1.21	0.62	0.95	1.37	1.50	1.93	0.89	1.65	0.82	1.17	0.67	1.37	0.75	0.85	0.46	0.41	0.69	0.70	0.45	0.72	0.69	0.76	1.00	0.93	0.71	0.95	0.92	0.64	0.59	0.51	0.45	0.55	0.52	
Albacore tuna	1.68	1.97	1.47	1.07	1.88	2.59	1.50	1.37	1.78	1.85	1.64	1.64	1.55	1.49	1.51	1.46	1.13	1.72	1.35	1.47	2.73	2.14	1.67	1.60	2.26	2.93	2.11	2.05	1.95	2.40	2.50	1.51	1.71	2.09	
Groundfish species group	0.50	0.66	0.66	0.87	0.96	0.53	0.64	0.69	0.88	0.70	0.75	0.71	1.11	1.01	0.94	1.12	1.14	1.07	1.02	1.02	1.44	1.01	1.07	1.21	1.23	1.00	0.82	0.78	0.60	0.62	0.71	0.63	0.51	0.60	
Nearshore live fishery															-	-	-	-	-	-	-	-	-	-	-	-	-	-	-	-	-	-	-	-	-
Sablefish (black cod)						0.62	0.60	0.75	1.07	1.00	1.27	1.11	2.58	2.99	2.14	2.43	2.61	2.35	2.65	3.23	4.82	2.69	3.28	3.39	3.60	3.64	2.67	2.05	1.44	1.59	1.93	1.33	0.90	0.94	
Trawl gear						0.44	0.47	0.57	0.82	0.83	0.91	0.86	2.37	2.37	1.79	2.10	2.15	1.84	2.26	2.77	3.39	2.21	2.64	2.62	2.65	2.52	1.63	1.20	0.78	0.94	1.08	0.91			
Fixed gear						0.85	0.79	0.97	1.31	1.32	1.87	1.54	2.86	4.02	2.59	2.91	3.23	2.92	3.34	3.92	5.88	3.17	3.87	3.97	4.27	4.57	3.49	2.71	1.81	2.12	2.58	1.58			
Widow rockfish						-	-	0.63	0.78	0.58	0.57	0.56	0.64	0.56	0.69	0.71	0.73	0.68	0.74	0.62	0.63	0.64	0.59	0.55	0.57	0.38	0.34	0.35	0.28	0.30	0.32	0.30	0.26	0.26	
Yellowtail rockfish						-	-	0.64	0.78	0.61	0.63	0.63	0.71	0.68	0.71	0.79	0.80	0.80	0.77	0.68	0.73	0.70	0.68	0.65	0.61	0.45	0.44	0.45	0.27	0.28	0.33	0.29	0.26	0.29	
Thornyhead, longspine						-	-	-	-	-	-	-	1.87	1.38	1.33	1.53	1.08	0.91	0.78	0.46	0.61	0.59	0.55	0.53	0.56	0.56	0.49	0.49	0.28	0.38	0.36	0.43			
Thornyhead, shortspine						-	-	-	-	-	-	-	2.15	1.56	1.64	1.73	1.33	1.11	0.95	0.79	0.84	0.87	0.89	0.86	0.85	0.84	0.71	0.63	0.46	0.47	0.50	0.49			
Thornyhead, mixed						-	-	0.63	0.79	0.83	0.96	0.96	-	-	-	-	-	-	-	-	-	-	-	-	-	-	-	-	-	-	-	-	-	-	-
Pacific Ocean perch						0.48	0.58	0.61	0.77	0.57	0.62	0.57	0.61	0.53	0.64	0.71	0.74	0.74	0.72	0.70	0.71	0.68	0.69	0.70	0.65	0.56	0.49	0.49	0.37	0.32	0.33	0.29			
Lingcod						0.66	0.67	0.66	0.92	0.76	0.69	0.74	0.82	0.87	1.37	2.01	1.85	1.59	1.67	1.84	1.52	1.50	1.63	2.17	1.97	1.73	2.01	1.92	1.99	1.83	2.04	1.64	1.19	1.35	
Arrowtooth flounder						0.27	0.27	0.25	0.36	0.22	0.24	0.20	0.22	0.19	0.18	0.20	0.20	0.16	0.15	0.15	0.14	0.15	0.13	0.13	0.13	0.13	0.13	0.12	0.11	0.04	0.11	0.13			
Dover sole						0.66	0.61	0.64	0.76	0.63	0.65	0.59	0.67	0.58	0.62	0.64	0.62	0.59	0.57	0.48	0.59	0.63	0.63	0.62	0.59	0.56	0.56	0.54	0.49	0.49	0.47	0.48	0.46	0.45	
English sole						0.87	0.88	0.84	0.99	0.83	0.70	0.64	0.71	0.61	0.62	0.62	0.57	0.51	0.47	0.43	0.45	0.43	0.43	0.41	0.42	0.41	0.35	0.31	0.27	0.19	0.17	0.21			
Petrale sole						1.58	1.89	1.86	2.00	1.88	1.73	1.60	1.88	1.73	1.74	1.70	1.69	1.44	1.43	1.27	2.03	1.71	1.48	1.61	1.58	1.52	1.51	1.55	1.46	1.32	1.35	1.32	1.22	1.41	
Cod, Pacific						0.64	0.67	0.65	0.80	0.59	0.63	0.66	0.76	0.74	0.82	1.01	1.00	0.73	0.80	0.66	0.81	0.77	0.72	0.79	0.79	0.77	0.80	0.80	0.65	0.63	0.61	0.50			
Whiting, Pacific						0.209	0.176	0.225	0.206	0.169	0.099	0.061	0.093	0.082	0.073	0.061	0.076	0.083	0.119	0.101	0.164	0.173	0.151	0.107	0.115	0.106	0.112	0.123	0.086	0.114	0.125	0.099	0.112	0.123	
Sardines						-	-	-	-	-	-	-	-	-	0.091	0.099	0.088	0.098	0.075	0.168	0.192	0.150	0.278	0.230	-	-	-	-	-	-	-	-	-	-	
Halibut, Pacific						3.18	2.95	2.49	3.77	3.20	3.94	2.62	3.34	3.44	3.62	3.31	4.22	3.96	5.20	4.18	7.60	6.56	7.60	7.16	7.36	6.72	6.69	6.10	5.74	7.33	6.86	5.52	5.41	7.17	
Sturgeon, white						3.12	3.07	3.70	4.05	4.34	4.13	2.75	3.38	2.00	2.45	3.03	2.88	2.78	3.15	2.84	3.60	4.36	4.73	4.29	5.32	4.44	4.65	4.40	4.55	3.81	3.61	6.32			
Sea urchin, red						-	-	-	0.70	0.78	1.59	1.76	1.56	1.01	1.03	1.10	0.70	0.47	0.55	0.66	0.75	0.76	0.75	0.77	0.80	1.66	2.60	3.91	3.52	3.42	3.05	2.72	2.55	2.07	
Market squid						-	0.73	0.46	-	0.18	-	0.48	0.33	0.35	-	0.34	0.43	0.37	-	-	-	-	-	-	0.53	-	0.56	0.68	0.71	0.68	0.67	-	0.66	0.60	

- Notes: 1. Annual prices are in 2025 real dollars. Adjustment used GDPD. Landings are during calendar year, including the Dungeness crab fishery.
2. Prices are for onshore landings. There will be differences for the same species, such as Pacific whiting, when delivered offshore. Landings from 1980 to 2023, other than inriver Chinook and coho, exclude harvests from research, discards, bait, personal use, seized, overages, live for aquariums, and unspecified disposition.
3. Prices are for round pound equivalents, except for troll Chinook and troll coho prior to 1981 which are based on dressed weight.
4. Prices where landings are less than \$500 annually are shown with a dash.
5. Inriver salmon prices include Oregon and Washington side landings. Inriver steelhead includes only Oregon side in 2017 to 2025.
6. The nearshore live groundfish fishery includes seven indicator species that are typically landed live in Oregon. These include cabezon, lingcod, black and blue rockfish, greenling, and other unspecified rockfish (not uniquely identified on a fish ticket).

Sources: TRG (June 2024) and PacFIN APEX report ALL001 downloaded January 2026. PFMC "Review of Ocean Salmon Fisheries," annual in February, for inriver Chinook and coho.

(This page is intentionally blank for printing purposes.)

Appendix B

Port Group Landings and Vessel/Processor Activity Trends

(This page is intentionally blank for printing purposes.)

Table B.1
Onshore Fisheries Volume and Value by Species and Port Groups for 2020 to 2025

Port Group	2020			2021			2022			2023			2024			2025		
	Volume	Value	Share	Volume	Value	Share	Volume	Value	Share	Volume	Value	Share	Volume	Value	Share	Volume	Value	Share
<u>Astoria</u>	190.5	57.4	30.9%	165.9	67.2	28.0%	161.6	52.2	36.6%	168.8	52.6	28.2%	186.6	75.2	40.3%	201.9	91.1	40.8%
Salmon	1.3	4.4		1.5	5.1		1.8	5.0		1.7	5.3		1.6	5.1		1.8	7.2	
D. Crab	4.5	19.2		5.0	29.1		1.3	9.0		5.5	13.7		7.6	28.6		4.6	30.1	
P. Shrimp	12.3	7.7		13.0	7.3		16.6	8.4		18.9	8.5		21.4	11.8		27.5	14.0	
Albacore	0.7	1.1		0.3	0.6		0.3	0.8		0.1	0.3		0.9	1.6		2.3	5.6	
Groundfish	26.7	11.6		25.9	12.0		26.1	13.7		25.7	13.4		31.4	13.9		35.2	17.0	
P. Whiting	142.8	12.1		118.9	12.7		112.9	13.6		114.9	11.1		122.4	13.8		129.8	16.5	
Other	2.2	1.3		1.4	0.4		2.7	1.6		1.9	0.4		1.3	0.3		0.7	0.6	
<u>Tillamook</u>	2.2	7.7	4.2%	3.0	13.4	5.6%	2.0	6.6	4.6%	3.2	9.0	4.9%	3.1	11.8	6.3%	2.3	9.3	4.2%
Salmon	0.0	0.1		0.0	0.2		0.1	0.7		0.0	0.0		0.0	0.1		0.0	0.3	
D. Crab	1.2	6.1		1.8	11.2		0.4	3.2		2.3	7.7		2.3	10.4		1.4	7.8	
P. Shrimp	0.0	0.0		0.0	0.0		0.0	0.0		0.0	0.0		0.0	0.0		0.0	0.0	
Albacore	0.2	0.4		0.4	0.9		0.6	1.6		0.1	0.2		0.1	0.3		0.1	0.2	
Groundfish	0.1	0.2		0.1	0.2		0.1	0.2		0.1	0.2		0.1	0.2		0.1	0.2	
P. Whiting	0.0	0.0		0.0	0.0		0.0	0.0		0.0	0.0		0.0	0.0		0.0	0.0	
Other	0.8	0.9		0.7	0.9		0.8	1.0		0.7	0.9		0.6	0.8		0.7	0.9	
<u>Newport</u>	118.9	73.5	39.6%	114.6	87.3	36.3%	101.6	52.3	36.7%	97.3	65.6	35.2%	50.2	61.8	33.1%	89.6	70.9	31.7%
Salmon	0.1	1.2		0.2	1.6		0.2	1.8		0.0	0.1		0.2	1.5		0.3	2.3	
D. Crab	9.0	40.5		8.8	50.2		1.5	11.0		13.2	41.3		9.0	40.0		6.5	34.9	
P. Shrimp	14.3	8.9		17.6	10.2		13.4	6.6		13.1	5.7		14.9	8.1		17.6	9.1	
Albacore	2.0	3.9		1.5	3.7		3.8	9.5		1.5	2.0		2.2	3.7		4.3	8.5	
Groundfish	9.9	6.7		15.1	9.2		19.9	12.6		19.2	10.4		4.3	4.2		8.0	7.5	
P. Whiting	76.8	6.5		65.2	7.7		57.5	7.0		49.1	4.6		12.6*	1.3*		45.9*	5.2*	
Other	6.9	5.7		6.2	4.5		5.2	3.8		1.2	1.5		7.0	2.9		7.0	3.4	
<u>Coos Bay</u>	20.0	29.8	16.1%	22.3	50.5	21.0%	15.3	21.5	15.1%	18.3	37.7	20.2%	20.3	29.9	16.0%	20.6	34.3	15.4%
Salmon	0.0	0.2		0.0	0.5		0.1	0.6		0.0	0.0		0.1	0.6		0.1	0.5	
D. Crab	3.5	15.9		6.4	36.6		1.1	7.7		10.2	31.5		3.7	17.3		3.8	20.4	
P. Shrimp	7.7	5.2		8.6	5.2		7.9*	3.9*		5.5*	2.5*		12.9	7.3		11.9*	6.3*	
Albacore	1.5	3.0		1.1	2.4		1.4	3.5		0.7	1.2		1.6	2.7		1.9	3.5	
Groundfish	1.9	1.6		2.1	2.3		2.2	3.3		1.8	1.8		1.6	1.2		2.7	2.9	
P. Whiting	0.0*	0.0*		0.0*	0.0*		0.0*	0.0*		0.0*	0.0*		0.0	0.0		0.0	0.0	
Other	5.3	3.9		4.1	3.5		2.7	2.6		0.2	0.8		0.4	0.7		0.3	0.7	
<u>Brookings</u>	12.9	17.1	9.2%	12.1	21.9	9.1%	6.0	9.9	7.0%	13.8	21.3	11.4%	2.5	8.2	4.4%	5.0	17.8	8.0%
Salmon	0.0	0.3		0.0	0.3		0.0	0.2		0.0	0.2		0.0	0.2		0.0	0.1	
D. Crab	1.8	7.3		2.3	13.2		0.5	3.5		6.0	15.5		1.4	6.0		2.8	14.3	
P. Shrimp	8.8	5.8		7.5	4.6		3.3*	1.7*		6.7*	3.0*		0.2*	0.1*		0.1*	0.0*	
Albacore	0.1	0.1		0.0	0.1		0.1	0.4		0.0	0.1		0.1	0.1		0.0	0.1	
Groundfish	1.7	2.2		1.9	2.5		1.7	3.2		0.8	1.9		0.6	1.4		2.0	2.9	
P. Whiting	0.0*	0.0*		0.0	0.0		0.0	0.0		0.0*	0.0*		0.0*	0.0*		0.0	0.0	
Other	0.6	1.3		0.3	1.2		0.3	1.0		0.3	0.8		0.1	0.4		0.1	0.4	
Total	344.6	185.5	100.0%	317.8	240.2	100.0%	286.5	142.5	100.0%	301.4	186.3	100.0%	262.7	186.8	100.0%	319.3	223.3	100.0%

- Notes: 1. Volume and value are millions. Volume is round pounds and value is ex-vessel. Values are in 2025 real dollars adjusted using the GDPDIPD.
2. Onshore landings includes the Oregon side landings in the Columbia River non-Indian and tribal salmon fishery. All Columbia River landings are included in the Astoria port group.
3. Amounts are for landings during calendar year, including Dungeness crab. The contracted species groups may have different detailed species mapping schemes than used in other tables showing volume and value.
4. Landings at some port groups for some fisheries show with an asterisk. The landing amounts were withheld from PacFIN APEX for confidentiality (less than three business entities) reasons. The numbers are provided in ODFW commercial fishing landing reports deemed in the public interest.

Source: PacFIN APEX report ALL005 downloaded February 2026. ODFW commercial fishing landing reports downloaded March 2026.

Table B.2
Onshore Fisheries Activity Counts by Port Groups 2020 to 2025

Port Group	2020		2021		2022		2023		2024		2025	
	Amount	Share	Amount	Share	Amount	Share	Amount	Share	Amount	Share	Amount	Share
<u>Astoria</u>												
Vessel counts	311	-	301	-	291	-	305	-	321	-	363	-
Processors	52	-	63	-	66	-	59	-	55	-	54	-
Deliveries	8,739	37.9%	7,422	33.4%	11,233	45.8%	8,039	35.9%	8,302	39.3%	10,687	44.1%
Volume	190.5	55.3%	165.9	52.2%	161.6	56.4%	168.8	56.0%	186.6	71.0%	201.9	63.2%
Value	57.4	30.9%	67.2	28.0%	52.2	36.6%	52.6	28.2%	75.2	40.3%	91.1	40.8%
<u>Tillamook</u>												
Vessel counts	115	-	129	-	145	-	111	-	122	-	119	-
Processors	40	-	40	-	58	-	46	-	43	-	46	-
Deliveries	2,929	12.7%	2,975	13.4%	2,964	12.1%	3,121	13.9%	2,882	13.7%	3,127	12.9%
Volume	2.2	0.7%	3.0	0.9%	2.0	0.7%	3.2	1.1%	3.1	1.2%	2.3	0.7%
Value	7.7	4.2%	13.4	5.6%	6.6	4.6%	9.0	4.9%	11.8	6.3%	9.3	4.2%
<u>Newport</u>												
Vessel counts	303	-	298	-	293	-	237	-	266	-	294	-
Processors	64	-	72	-	80	-	76	-	80	-	86	-
Deliveries	4,825	20.9%	4,918	22.2%	4,161	17.0%	4,366	19.5%	4,242	20.1%	4,444	18.3%
Volume	118.9	34.5%	114.6	36.1%	101.6	35.4%	97.3	32.3%	50.2	19.1%	89.6	28.1%
Value	73.5	39.6%	87.3	36.3%	52.3	36.7%	65.6	35.2%	61.8	33.1%	70.9	31.7%
<u>Coos Bay</u>												
Vessel counts	219	-	211	-	179	-	171	-	192	-	204	-
Processors	62	-	64	-	63	-	81	-	73	-	70	-
Deliveries	2,212	9.6%	2,834	12.8%	2,199	9.0%	2,464	11.0%	2,397	11.4%	2,457	10.1%
Volume	20.0	5.8%	22.3	7.0%	15.3	5.4%	18.3	6.1%	20.3	7.7%	20.6	6.5%
Value	29.8	16.1%	50.5	21.0%	21.5	15.1%	37.7	20.2%	29.9	16.0%	34.3	15.4%
<u>Brookings</u>												
Vessel counts	170	-	157	-	157	-	165	-	141	-	140	-
Processors	39	-	38	-	50	-	45	-	48	-	47	-
Deliveries	4,359	18.9%	4,048	18.2%	3,946	16.1%	4,397	19.6%	3,285	15.6%	3,505	14.5%
Volume	12.9	3.8%	12.1	3.8%	6.0	2.1%	13.8	4.6%	2.5	1.0%	5.0	1.6%
Value	17.1	9.2%	21.9	9.1%	9.9	7.0%	21.3	11.4%	8.2	4.4%	17.8	8.0%
<u>Port Orford</u>												
Vessel counts	64	-	69	-	67	-	76	-	62	-	57	-
Processors	39	-	22	-	27	-	25	-	28	-	25	-
Deliveries	2,456	10.6%	2,500	11.3%	2,335	9.5%	2,461	11.0%	2,074	9.8%	1922	7.9%
Volume	1.4	0.4%	1.3	0.4%	1.0	0.4%	2.5	0.8%	1.1	0.4%	1.5	0.5%
Value	5.0	2.7%	6.0	2.5%	4.1	2.9%	7.0	3.7%	3.9	2.1%	6.3	2.8%
<u>State</u>												
Vessel counts	901	-	886	-	868	-	813	-	821	-	880	-
Processors	182	-	196	-	219	-	224	-	215	-	218	-
Deliveries	23,064	100.0%	22,197	100.0%	24,503	100.0%	22,387	100.0%	21,108	100.0%	24,220	100.0%
Volume	344.6	100.0%	317.8	100.0%	286.5	100.0%	301.4	100.0%	262.7	100.0%	319.3	100.0%
Value	185.5	100.0%	240.2	100.0%	142.5	100.0%	186.3	100.0%	186.8	100.0%	223.3	100.0%

- Notes: 1. Vessel counts are unique vessels delivering during a year. A vessel may deliver to more than one port group. Vessel counts exclude deliveries with vessel identification of "MISSING", "UNKNOWN", or blank on fish ticket data. This type of identification would include vessels making deliveries in tribal fisheries.
2. Processors are first purchasers and include vessels making direct sales to the public. A single processor company can make purchases in multiple port groups.
3. Deliveries are fish ticket counts. In rare circumstances, multiple fish tickets are issued for one vessel trip.
4. Landings volume (round weight) and value (ex-vessel) are in millions. Values are in 2025 dollars adjusted using the GDPIPD.
5. Landings are during calendar year, including Dungeness crab.
6. Landings includes the Oregon side landings in the Columbia River non-Indian and tribal salmon fisheries.
7. Port Orford is a subset on the Brookings port group.

Source: Data provided by PacFIN as specified in legacy table "fusport."

Table B.3
Oregon Crewmember and Boat Licenses by Port Groups in Select Years

Crew Member Licenses

<u>Port Group</u>	<u>2012</u>	<u>2017</u>	<u>2019</u>	<u>2021</u>	<u>2023</u>	<u>2025</u>
Astoria	90	96	82	96	103	130
Tillamook	56	70	70	85	83	85
Newport	123	200	198	257	233	245
Depoe Bay	4	2	3	2	2	0
Newport	63	100	116	153	127	132
Waldport	2	8	5	10	10	8
Other	54	90	74	92	94	105
Coos Bay	156	174	172	128	127	106
Brookings	103	118	146	146	158	158
Coastwide	528	658	668	712	704	724
All Oregon addresses	658	771	778	816	808	826
All addresses	955	1,116	1,237	1,343	1,232	1,314

Boat Licenses

<u>Port Group</u>	<u>2012</u>	<u>2017</u>	<u>2019</u>	<u>2021</u>	<u>2023</u>	<u>2025</u>
Astoria	211	219	193	189	197	193
Tillamook	108	90	94	103	107	110
Newport	195	196	189	185	178	161
Depoe Bay	12	10	9	4	2	3
Newport	86	98	98	91	76	70
Waldport	12	10	12	9	10	11
Other	85	78	70	81	90	77
Coos Bay	217	209	203	186	160	143
Brookings	156	153	145	136	138	134
Coastwide	887	867	824	799	780	741
All Oregon addresses	1,148	1,112	1,058	1,014	969	927
All addresses	1,556	1,581	1,570	1,475	1,422	1,389

Notes: 1. Includes licenses with status "A."

Source: ODFW (Feb. 2013, Mar. 2018, Dec. 2020, Jun. 2023, and Mar. 2026).

Table B.4
Oregon Fisheries Permit Types and Counts

Permit Type	Start of Fishery	Start of LE	Initial Permits Allowed	Current Permits
Coastwide Bay Clam Dive	~1995	2006	15	9
Columbia River Gillnet	~1860's	1979	-	267
Ocean Dungeness Crab	~1915	1999	465	421
Ocean Pink Shrimp	1957	1987	235	136
Ocean Sardine	1999	2006	20	16
Ocean Scallop	1981	1981	25	13
Ocean Troll Salmon	1912	1980	4,311	755
Rockfish Vessel/Nearshore	~1995	2004	116/73	40/67
Sea Urchin/Cucumber	1986	1988	38	13
Yaquina Bay Roe Herring	1978	1984	10	7

- Notes: 1. Current permit counts show as “active” status in permit files as of December 31, 2025. Permits must be annually renewed and some have minimum landing thresholds. Permits are lost if not renewed, but there are appeal considerations. Permits can be transferred to new owners with restrictions on similar vessel capacities (e.g. vessel lengths and horsepower) and successive annual landings. The restrictions cause permit counts to wither and promote control of fleet fishing power.
2. The ocean sardine fishery with deliveries to Columbia River ports did have harvests starting in the 1930's (Emmett et al. 2005). The fishery collapsed starting in the late 1940's.
3. The limited entry permits allowed has decreased over the years for many of the shown permit types. For example, allowed permits is now 200 for Columbia River gillnet permits. Statutes and rules usually call for a lottery to be used when current counts fall below allowed floors, but there has been suspensions and disallowances for some types (e.g. Dungeness crab and Columbia River gillnet).
4. There are other fisheries that do not have limited entry such as market squid, albacore tuna, hagfish, some groundfish, and intertidal clam.
5. Current permit counts does not necessarily show unique owner counts. Owners can have multiple permits within a permit type. There are single owner holding restrictions within the federal limited entry groundfish program (e.g. the Pacific whiting onshore fishery).

Source: ODFW (August 2024), TRG Table II.11 (September 2017), and ODFW Exhibit C (June 16, 2023).

Appendix C

Commercial and Recreation Fisheries Effort Trends

(This page is intentionally blank for printing purposes.)

Table C.1
Vessel Counts and Landings for Directed Fisheries in 2020 to 2023

Fishery Strategy	2020				2021				2022				2023			
	Vessel Counts	Deliveries	Volume (000's)	Revenue (\$000's)	Vessel Counts	Deliveries	Volume (000's)	Revenue (\$000's)	Vessel Counts	Deliveries	Volume (000's)	Revenue (\$000's)	Vessel Counts	Deliveries	Volume (000's)	Revenue (\$000's)
Salmon (all species) using net	121	3,910	1,334	4,348	135	4,317	1,519	4,988	137	4,350	1,714	4,863	151	4,503	1,675	5,085
Salmon (all species) using troll	174	1,137	209	1,861	186	1,156	266	2,626	179	1,425	427	3,458	90	463	72	436
Pink shrimp using trawl	74	1,098	43,133	27,622	72	988	46,670	27,320	59	749	41,027	20,513	56	845	44,089	19,713
Sablefish using trawl	8	9	231	162	8	13	300	310	13	21	549	589	10	14	268	278
Sablefish using fixed	71	325	2,452	4,436	61	317	2,492	5,242	91	516	3,386	8,647	92	453	3,777	5,872
Pacific whiting or widow rockfish using midwater trawl gear	28	1,069	232,641	22,053	28	887	202,646	25,681	27	878	189,161	26,592	27	840	181,078	20,687
Albacore using troll	209	661	4,419	8,621	191	554	3,222	7,735	251	828	6,267	15,662	175	499	2,451	3,711
Dungeness crab using pot gear during the ocean season Dec 1 through Aug 14	320	5,689	19,986	88,868	327	4,793	12,111	70,398	311	5,948	17,158	99,890	311	6,150	31,577	89,435
Groundfish other than whiting and sablefish, using trawl other than midwater	32	390	15,764	9,867	31	368	15,583	10,083	36	348	15,410	10,379	30	347	14,683	10,113
Groundfish other than whiting and sablefish, using fixed gear	183	3,010	577	1,925	154	2,847	599	1,977	170	3,285	747	2,433	177	2,959	667	2,114
Market squid using net gear	40	219	10,280	7,335	31	250	7,837	5,315	25	151	5,521	3,686			0	0
Halibut using longline or other hook and line gear during the period June 15 to July 30	53	126	165	955	64	138	246	1,797	56	142	232	1,591	68	149	264	1,450
Other	170	5,453	4,385	5,006	145	3,805	3,347	3,932	147	7,633	3,941	5,284	117	4,463	3,479	3,778
None (fish tickets with zero dollars)	16	19			6	6			15	21			18	23		
All fisheries	900	23,115	335,577	183,061	885	20,439	296,838	167,405	866	26,295	285,540	203,587	812	21,708	284,082	162,673

- Notes: 1. Landings revenue is adjusted to 2025 dollars using the GDPIPD.
2. Vessel counts and landings are in fishery categories aligned with fishing strategies. A strategy is defined to be a species and gear combination. The table compilations were made if that combination was plurality revenue on a delivery. This eliminates counts and landings when harvests were incidental.
3. "Vessel counts" include those that landed at Oregon ports and had a valid vessel identification number. Vessels or non-vessels (such as from a dock) with identification of "MISSING", "UNKNOWN", or blank are excluded. "Delivery counts" include those with no valid vessel identification number. These are typically vessels delivering in tribal fisheries.
4. Vessel counts across fishery strategies will not sum to the "all fisheries" row because vessels can participate in more than one fishery.
5. Landings are during calendar year, except the Dungeness crab fishery is by December 1 of previous year through August 14 of stated year seasons.

Source: TRG (June 2024).

Table C.2
Ocean Recreational Fisheries Trip Trends in 2020 to 2025

Target Fishery	2020	2021	2022	2023	2024	2025
Salmon	42,416	79,975	72,617	58,958	60,209	68,819
Salmon/bottomfish combo	14,569	18,686	23,766	17,395	17,164	20,632
Halibut	20,183	12,851	17,307	19,159	17,655	15,574
Tuna	2,563	5,815	5,335	8,948	10,224	9,897
Bottomfish	103,425	99,510	116,633	101,708	99,503	99,891
Dive spearfish	179	82	118	178	45	20
Other	<u>11,287</u>	<u>11,724</u>	<u>11,822</u>	<u>11,803</u>	<u>10,928</u>	<u>13,876</u>
Total trips	194,622	228,643	247,598	218,149	215,728	228,709

- Notes: 1. Year 2025 trip data is through December.
2. Trips are angler days.
3. Trips include private and charter modes. Beach and jetty fishing trip locations are not included.
4. Trip target fishery is exclusive, i.e. trip itemizations are additive.

Source: RecFIN March 25, 2026 extraction.

Table C.3
Ocean Recreational Fisheries Retained Catch Trends in 2020 to 2025

<u>Species by Trip Type</u>	<u>2020</u>	<u>2021</u>	<u>2022</u>	<u>2023</u>	<u>2024</u>	<u>2025</u>
0. All trip types	540,459	590,833	688,526	630,728	630,402	568,766
1. Salmon	23,252	86,828	73,845	60,745	66,382	66,642
a. Chinook salmon	6,017	7,160	6,784	5,933	4,993	5,102
b. Coho salmon	16,092	78,382	63,197	52,160	59,670	59,541
c. Pink salmon	0	1	0	62	0	62
d. Black rockfish	837	722	1,037	344	900	1,119
e. Lingcod	115	65	182	113	201	223
f. All other	191	498	2,645	2,133	618	595
2. Salmon/bottomfish combo	42,410	59,039	79,858	60,149	61,410	68,524
a. Chinook salmon	1,141	1,087	1,616	333	701	622
b. Coho salmon	4,705	14,866	15,640	10,661	10,212	13,418
c. Pink salmon	3	0	0	54	0	45
d. Black rockfish	22,103	28,843	34,679	20,602	22,101	28,977
e. Yellowtail rockfish	2,815	2,834	7,550	9,372	9,213	8,447
f. Canary rockfish	2,649	1,905	5,744	4,478	4,731	1,977
g. Lingcod	3,898	3,615	6,045	4,595	5,729	6,598
h. Pacific halibut	1,792	2,202	1,762	1,389	1,480	1,266
i. All other	3,304	3,687	6,822	8,665	7,243	7,174
3. Halibut	28,968	19,362	34,360	42,133	41,796	30,783
a. Pacific halibut	10,165	7,007	10,291	13,308	12,966	10,874
b. Black rockfish	6,406	4,219	5,666	5,179	4,331	3,514
c. Canary rockfish	1,763	1,714	4,314	5,202	6,077	2,960
d. Yellowtail rockfish	1,251	1,934	4,153	4,303	4,219	2,046
e. Petrale sole	3,173	1,334	2,274	2,794	4,344	2,814
f. Lingcod	1,982	1,360	2,796	4,480	3,744	3,870
g. Sablefish	859	291	474	646	955	649
h. All other	3,369	1,503	4,392	6,221	5,160	4,056
4. Tuna	4,902	20,887	20,667	35,011	56,077	42,770
a. Albacore	4,892	20,850	20,601	34,686	56,037	42,666
b. All other	10	37	66	325	40	104
5. Bottomfish	440,466	404,475	479,411	432,146	404,586	360,012
a. Black rockfish	273,097	264,542	313,356	225,104	220,094	205,113
b. Yellowtail rockfish	27,934	21,389	31,677	60,816	44,868	27,970
c. Canary rockfish	42,786	29,869	31,026	35,620	30,064	14,371
d. Deacon rockfish	19,722	16,982	17,836	27,416	28,956	25,200
e. Blue rockfish	5,132	5,448	7,886	6,701	8,445	9,815
f. Widow rockfish	4,542	4,704	4,034	7,065	2,901	3,233
g. Kelp greenling	3,764	3,711	5,118	3,506	3,731	3,163
h. Cabezon	3,772	3,164	4,110	3,503	3,576	3,084
i. Lingcod	46,974	43,745	51,994	48,878	48,982	55,151
j. All other	12,743	10,921	12,374	13,537	12,969	12,912
6. Dive spearfish	461	242	375	538	147	35
a. Black rockfish	379	181	279	417	112	27
b. All other	82	61	96	121	35	8
7. Other	0	0	10	6	4	0

Notes: 1. Catch is in number of fish.

2. Year 2025 trip data is through October for halibut, and December for all other.

3. Trips include private and charter modes. Beach and jetty fishing trip locations are not included.

Source: RecFIN March 24, 2026 extraction.

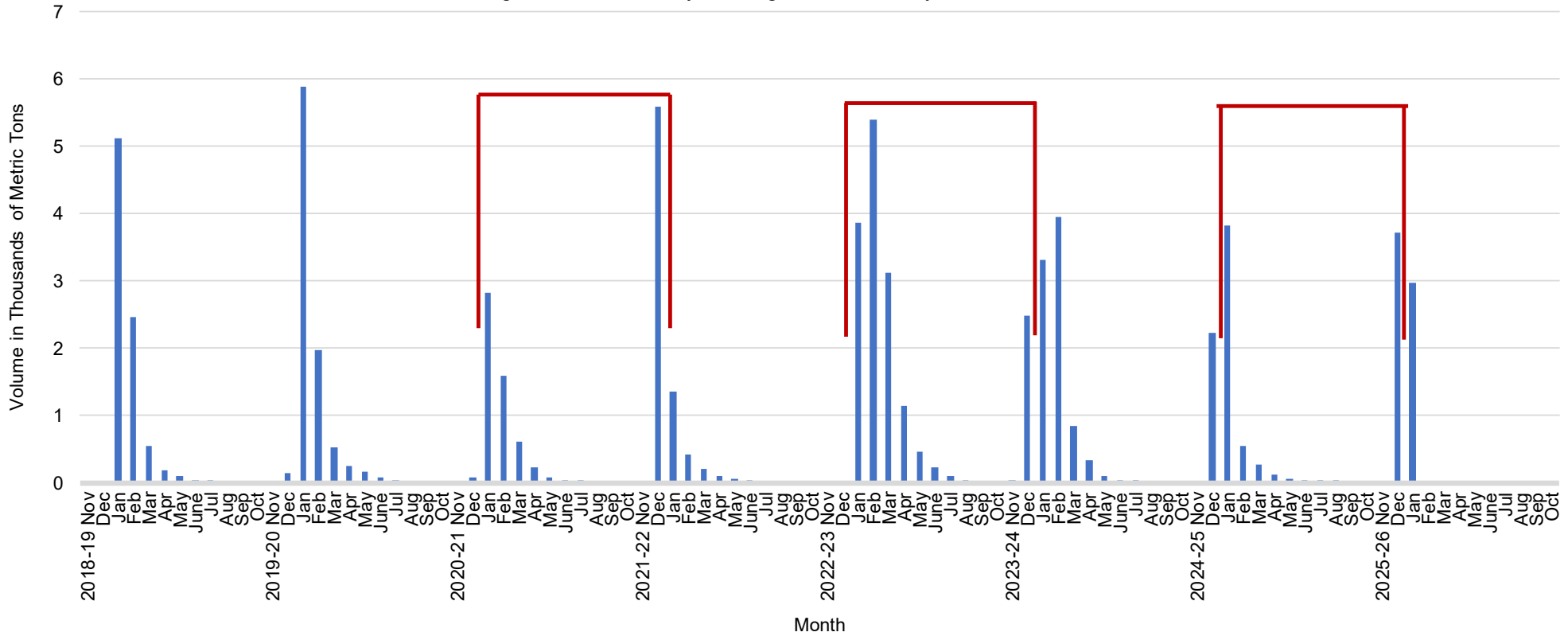
(This page is intentionally blank for printing purposes.)

Appendix D

Dungeness Crab Fishery Season Landings History

(This page is intentionally blank for printing purposes.)

Figure D.1
Dungeness Crab Fishery Landing Volume Monthly in 2019-2026



Calendar Year	December Landings?	Calendar Landings (mt)	Season Landings (mt)
2018	No		
2019	No	8,634.3	8,487.7
2020	No	9,024.2	9,096.1
2021	Yes	11,022.9	5,522.6
2022	No	2,232.5	7,804.6
2023	Yes	16,865.4	14,357.8
2024	Yes	10,853.3	11,145.1
2025	Yes	8,633.0	7,156.0
2026			

Notes: 1. Bracketed calendar years are anomalies when December delayed season high catch rates are moved to the following January and include high catch rates in the following season's December.

Source: PacFIN APEX report CRAB001 downloaded February 2026.

(This page is intentionally blank for printing purposes.)

Appendix E

Oregon Resident Participation in Alaska Fisheries

(This page is intentionally blank for printing purposes.)

Table E.1
Alaska Crewmember and Boat Licenses by Port Groups in Select Years

Crew Member Licenses

<u>Port Group</u>	<u>2011</u>	<u>2017</u>	<u>2019</u>	<u>2020</u>	<u>2021</u>	<u>2022</u>	<u>2023</u>	<u>2024</u>
Astoria	160	97	108	102	87	95	105	98
Tillamook	4	5	11	8	5	10	3	5
Newport	115	126	115	110	109	108	122	111
Depoe Bay	3	2	2	3	2	2	1	1
Newport	45	55	41	47	47	41	46	43
Waldport	8	7	7	12	13	16	13	10
Other	59	62	65	48	47	49	62	57
Coos Bay	86	40	29	27	46	47	46	45
Brookings	8	9	12	6	10	12	19	22
Coastwide	373	277	275	253	257	272	295	281
All Oregon addresses	1,348	982	993	756	838	869	890	816
All addresses	23,755	21,244	20,505	17,702	17,805	18,200	16,674	15,641

Source: ADFG (Dec. 2012, Jan. 2019, Nov. 2020, Mar. 2023, and Feb. 2026).

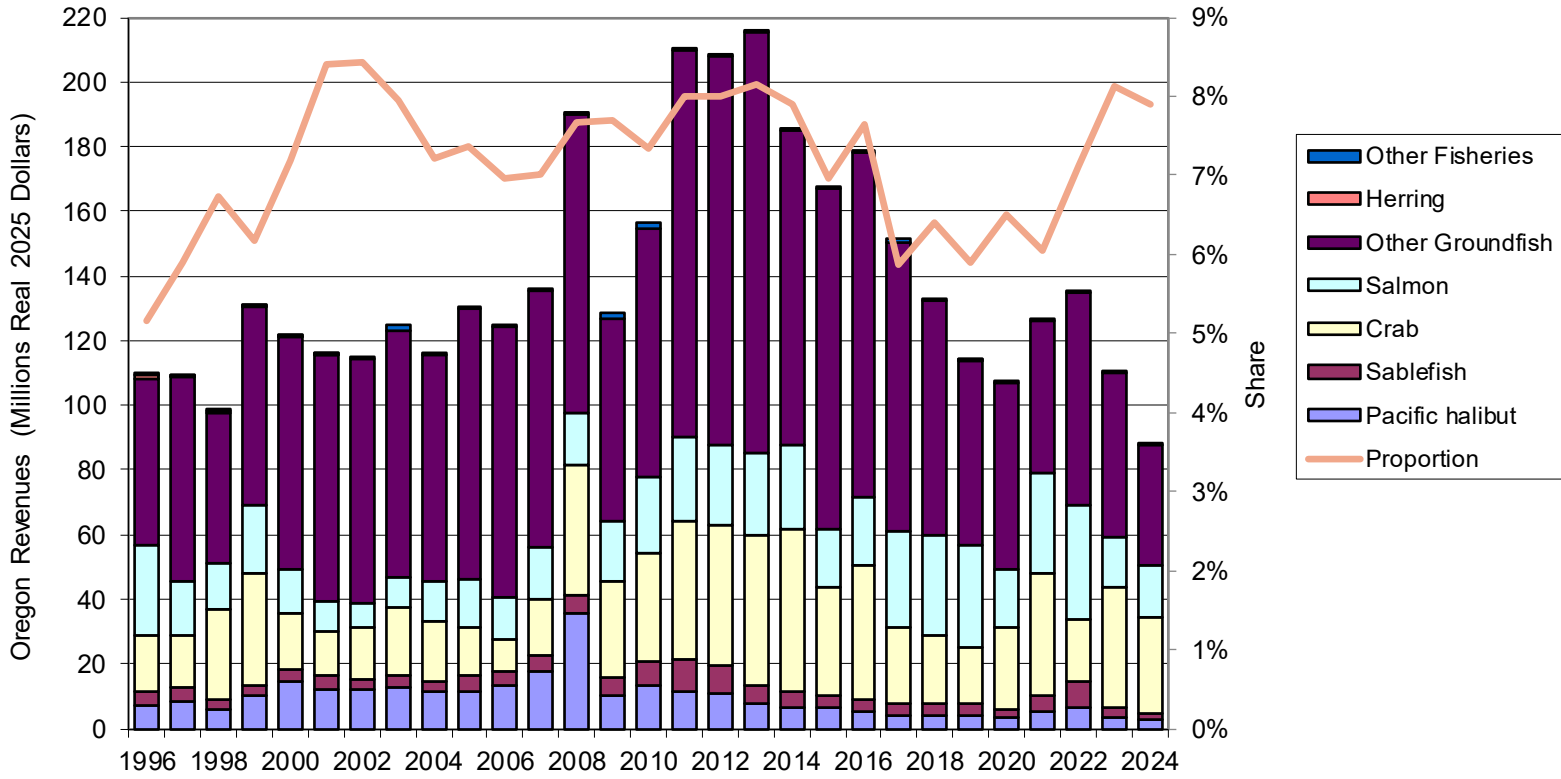
Boat Licenses

<u>Port Group</u>	<u>2012</u>	<u>2017</u>	<u>2019</u>	<u>2020</u>	<u>2021</u>	<u>2022</u>	<u>2023</u>	<u>2024</u>	<u>2025</u>
Astoria	70	56	53	47	50	49	42	45	46
Tillamook	0	1	1	1	2	1	1	0	0
Newport	34	27	23	19	20	24	22	25	21
Depoe Bay	3	2	1	1	1	1	1	1	1
Newport	24	20	18	15	14	19	16	17	14
Waldport	2	2	1	0	0	0	0	2	1
Other	5	3	3	3	5	4	5	5	5
Coos Bay	10	8	8	5	7	7	4	3	5
Brookings	4	3	2	2	2	2	4	4	4
Coastwide	118	95	87	74	81	83	73	77	76
All Oregon addresses	294	276	273	243	251	250	241	231	232
All addresses	9,995	9,200	8,813	8,468	8,295	8,076	7,771	7,372	7,108

Notes: 1. Vessels filtered by ADFG vessel number.

Source: Alaska CFEC (Feb. 2013, Jan. 2019, Jan. 2021, Apr. 2023, and Feb. 2026).

Figure E.1
Oregon Resident Permit Holders CFEC Fisheries Earnings and Proportion in 1996 to 2024

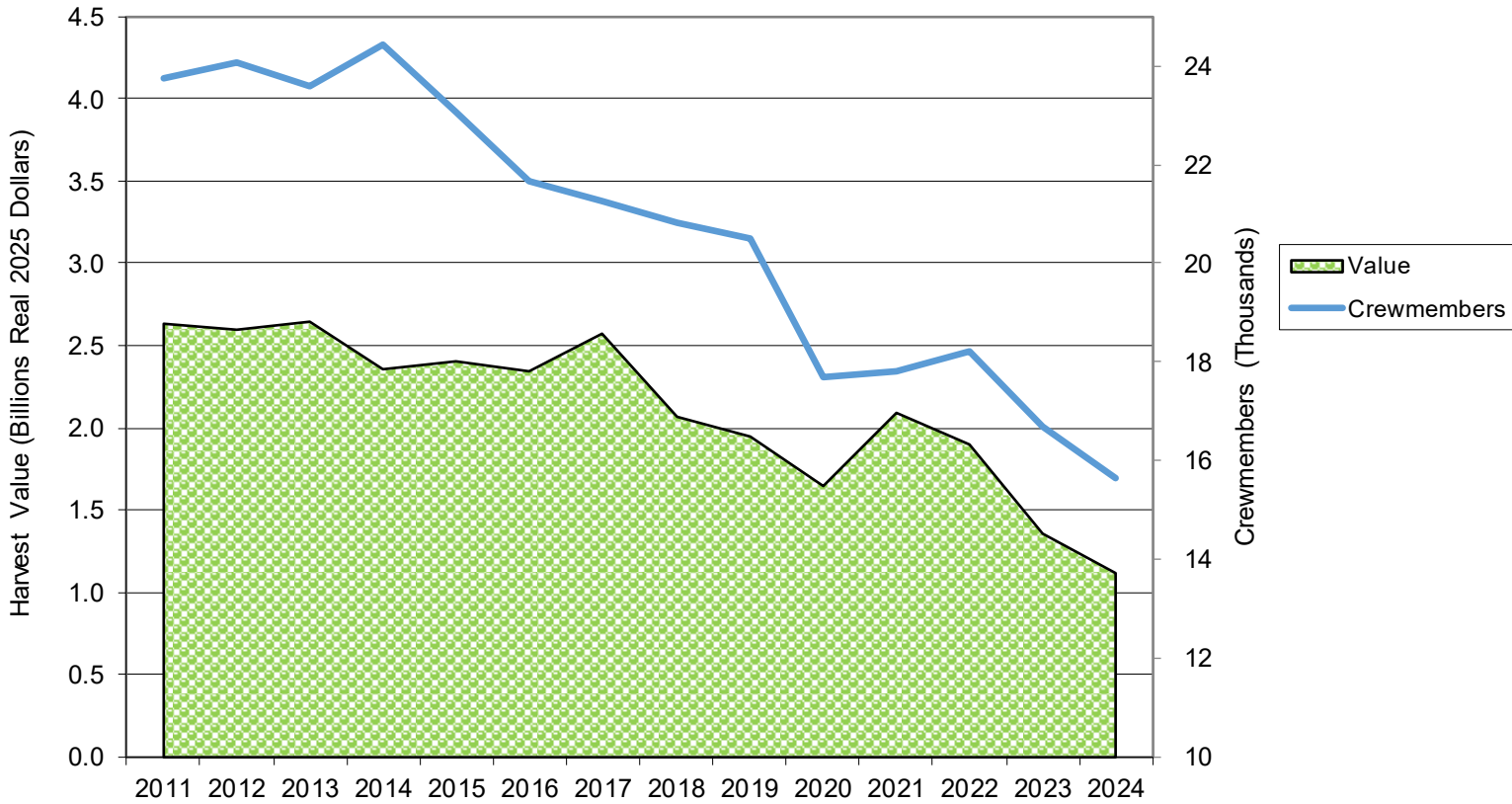


Notes: 1. Alaska Commercial Fisheries Entry Commission (CFEC) earnings are adjusted to 2025 dollars using the GDPIPD.

2. Proportion is Oregon resident permit holder share of total CFEC fisheries.

Source: CFEC February 2009, May 2013, September 2015, October 2017, September 2020, March 2023, and February 2026 extractions.

Figure E.2
Alaska Total Fisheries Harvest Value and Crewmember Counts in 2011 to 2024



Notes: 1. Alaska Commercial Fisheries Entry Commission (CFEC) earnings are adjusted to 2025 dollars using the GDPIPD.

Source: CFEC February 2009, May 2013, September 2015, October 2017, September 2020, March 2023, and February 2026 extractions. ADFG personal communication, February 2026 for crewmember counts.